

The Future of

# Luxury Experiences

Insights Report  
Spring 2026

**SCADask**

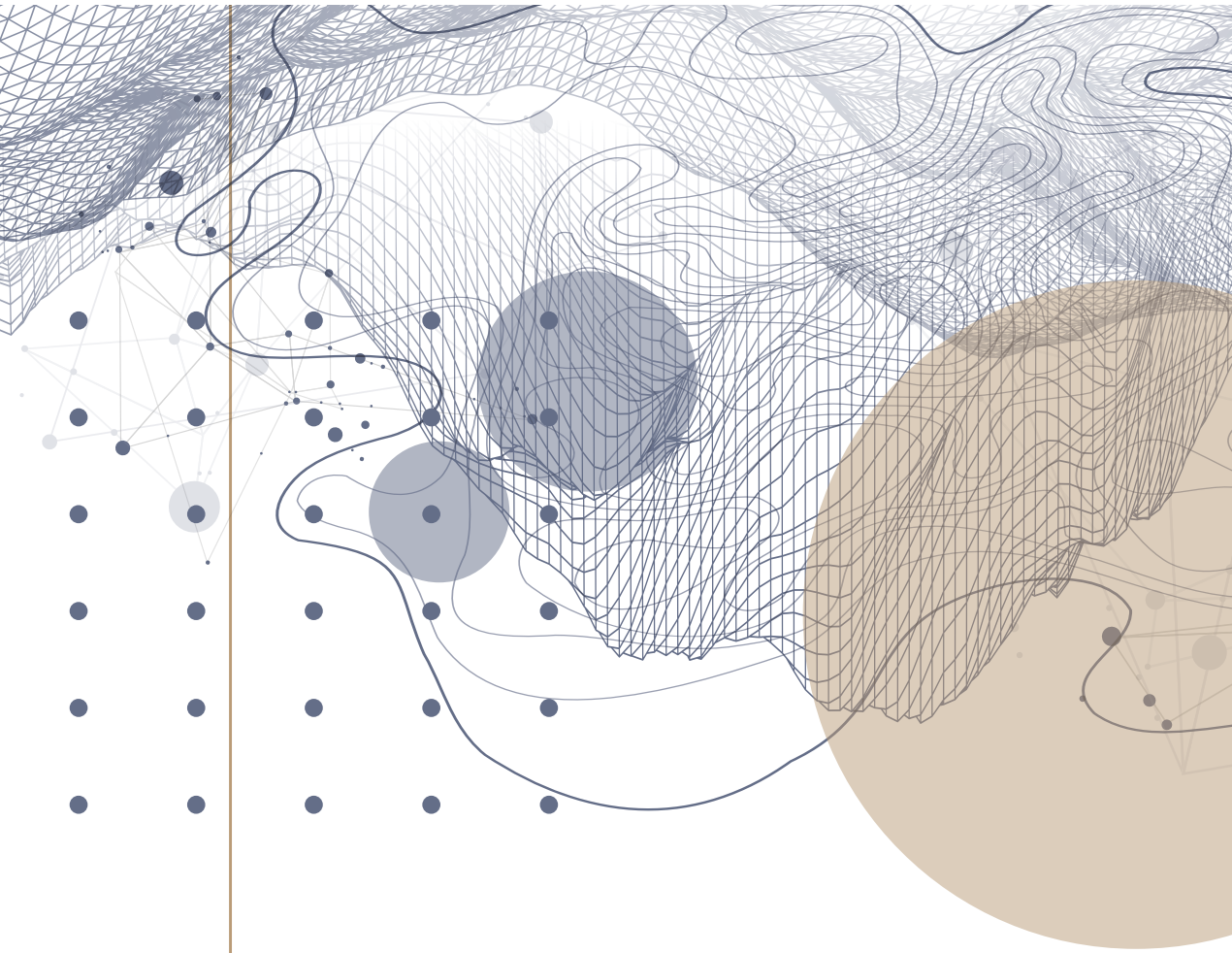
SCAD is a private, nonprofit, accredited university, offering 100 graduate and undergraduate degree programs across locations in Atlanta and Savannah, Georgia; Lacoste, France; and online via SCADnow. SCAD enrolls approximately 18,500 undergraduate and graduate students from more than 100 countries. The future-minded SCAD curriculum engages professional-level technology and myriad advanced learning resources, affording students opportunities for internships, professional certifications, and real-world assignments with corporate partners through SCADpro, the university's renowned research lab and prototype generator. SCAD has earned top rankings for degree programs in interior design, architecture, film, fashion, digital media, and more. Career success is woven into every fiber of the university, resulting in a superior alumni employment rate. A 2025 study found that 99% of recent SCAD graduates were employed, pursuing further education, or both within 12 months of graduation. SCAD provides students and alumni with ongoing career support through personal coaching, alumni programs, a professional presentation studio, and more.

Visit [scad.edu](https://scad.edu).

The Future of  
**Luxury**  
**Experiences**

Insights Report  
Spring 2026

**SCADask**



# Contents

Executive Summary	01
The Human Element in Digital Luxury	02
Luxury Operates Through Intelligent Systems	04
The Future of Luxury Technology	06
Future Scenarios	08
01 Autonomous Identity Ecosystems	10
02 Sentient Supply Chains	20
03 Conscious Luxury Networks	30
Appendices	41

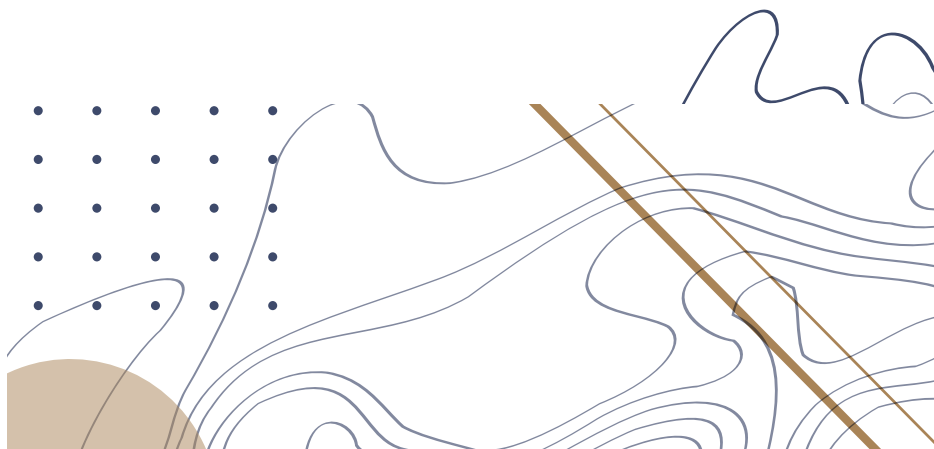




“

Luxury has found that interaction with the consumer is a critical part of keeping the brand elevated and resonating with their audience.

– **Marshal Cohen**, Chief Retail Advisor at Circana



# Executive Summary

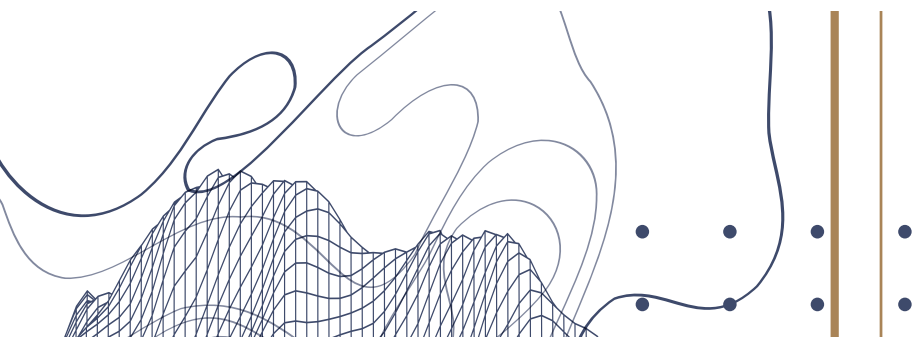
This research explores how technology and culture are rewriting luxury's core contracts of trust and exclusivity. Through secondary research, expert interviews, and consumer surveys, the study maps the forces challenging legacy models and identifies where luxury can evolve while preserving human meaning.

## Key Innovation Themes

- A. **Identity & Trust** – Self-sovereign identity, verified platforms, transparent AI orchestration.
- B. **Resilience & Provenance** – Adaptive, provenance-forward systems that protect continuity.
- C. **Well-being & Belonging** – Experiences that link personal vitality with collective stewardship.

## Luxury Inspired Solutions

Digitally enabled luxury succeeds when innovation feels intimate. The findings show how brands can align AI with ritual, make transparency a visible marker of prestige, and expand exclusivity into networks of shared contribution. The invitation is clear: design experiences that remain emotionally resonant and technologically fluent.



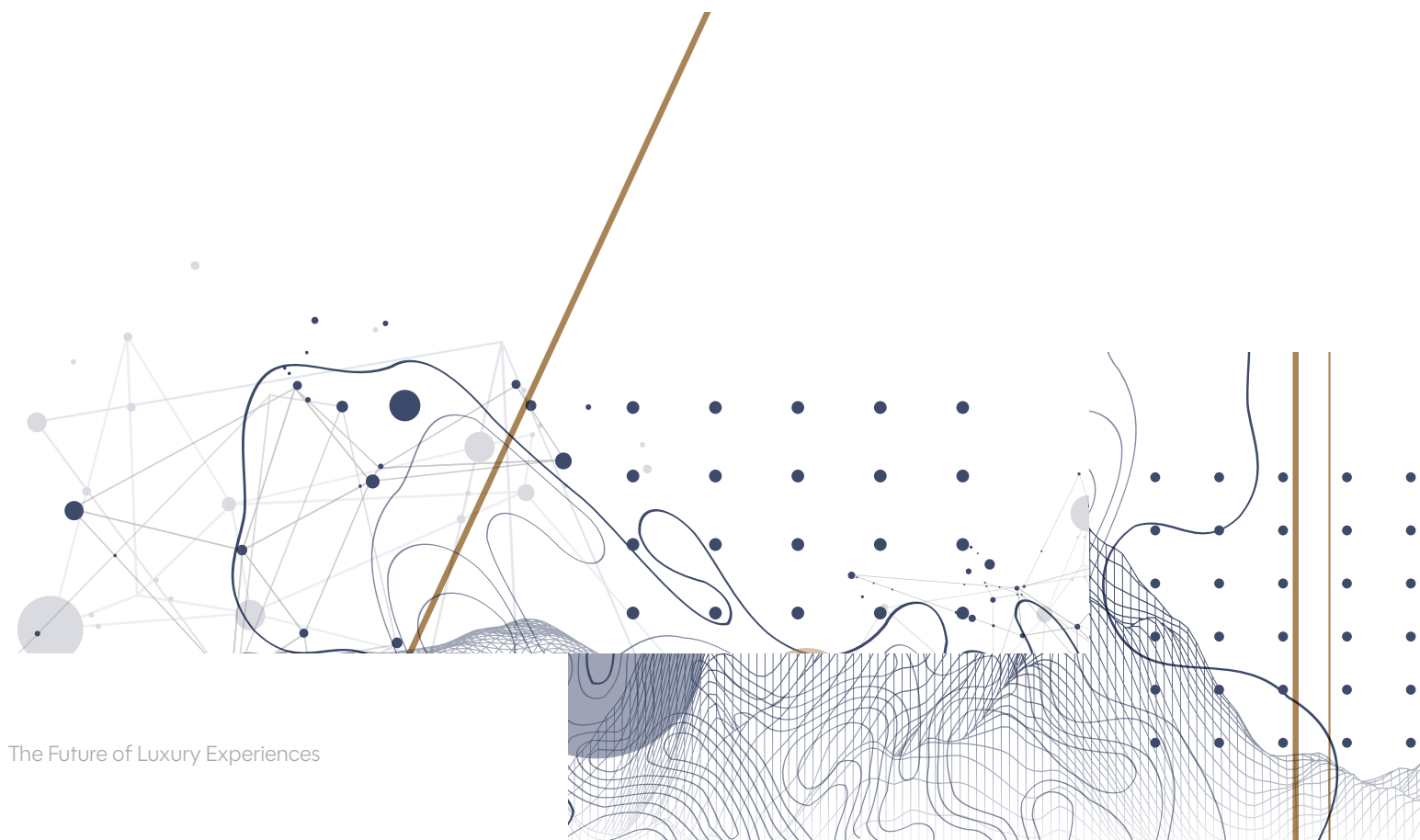
# The Human Element in Digital Luxury

Technology reframes trust, but emotion preserves it. The next chapter of luxury is not about automation, it is about orchestration that interprets emotion, ritual, and heritage.

## We believe:

- **Luxury evolves from personalization into sovereignty.**  
Anticipation becomes a reflection of trust and respect, not exposure.
- **AI curates meaning rather than mechanizing it.**  
Intelligence amplifies interpretation, transforming efficiency into empathy.
- **Well-being is inseparable from stewardship.**  
Prestige arises from collective regeneration and cultural continuity.

Luxury is shifting from an individual pursuit to a system of relationships — between human and machine, craft and code, personal value and planetary vitality.



“

If orchestration feels intrusive, presumptive, or even creepy, it fails. The challenge for luxury is to use AI selectively — to make the journey more efficient and personal without ever crossing into surveillance.

— **Stephanie Horton**, Senior Director Global Consumer Marketing,  
Commerce (Shopping/Payments), Google

# Luxury Operates Through Intelligent Systems

Luxury no longer functions as a sequence of isolated touchpoints. It operates through interconnected systems that shape how identity, trust, and belonging unfold across every stage of the client journey.

AI orchestration, provenance networks, and decentralized identity form the invisible architecture of contemporary luxury. Clients expect anticipation without exposure, transparency without fatigue, and exclusivity without exclusion.

## A Strategic Balance in Technology Adoption

Brands are expanding AI beyond marketing into orchestration that spans design, logistics, service, and storytelling. Emerging Web3 infrastructures, including digital product passports, traceable sourcing, and blockchain verification creates transparent trust loops that preserve both authenticity and emotion.

04



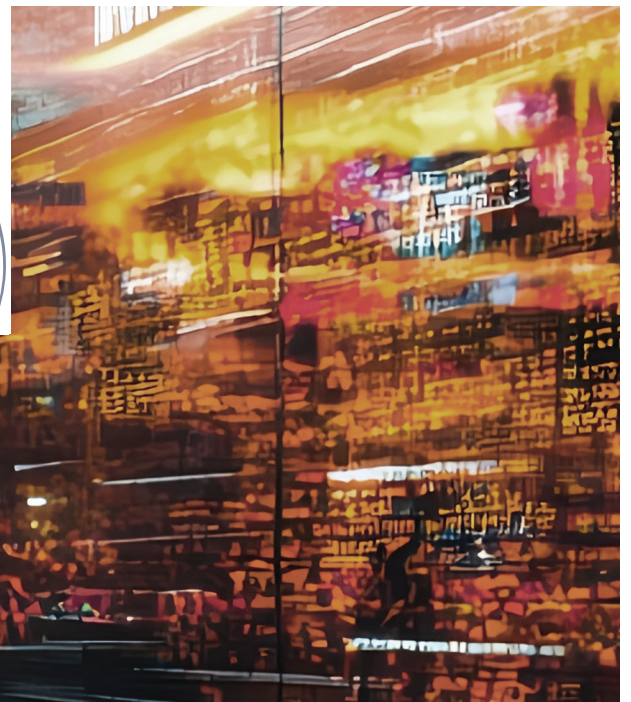
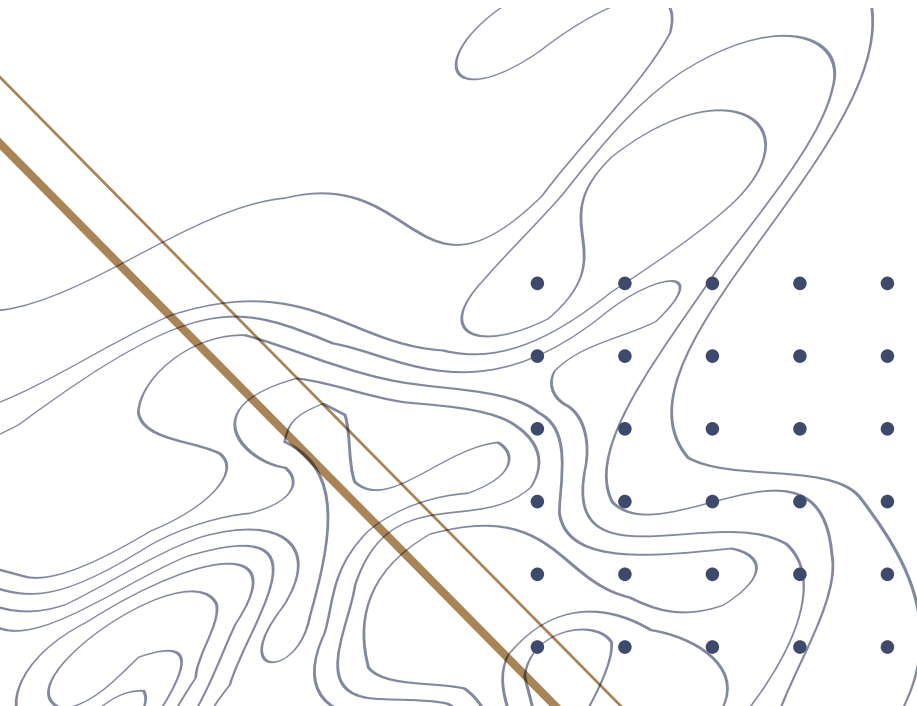
From the client's perspective, AI enables journeys that feel seamless and aligned with personal values. Decentralized identity restores sovereignty by ensuring data and provenance remain verifiable and under client control. Together these systems create ecosystems where values, experience, and prestige reinforce one another.

## Evolving Client Expectations

Clients now define value through experience, continuity, and reciprocity.

- Personalization must feel sovereign, not extractive.
- Provenance must demonstrate resilience and intention.
- Participation must express stewardship.

Prestige now emerges from ecosystems that honor identity, perform resilience, and reward contribution, rather than from exclusivity alone.



# The Future of Luxury Technology

## Future Scenario

## Luxury Sector

## Customer Desires

### Autonomous Identity Ecosystems

- Fashion & Personal Goods
- Hospitality & Travel

- Anticipation without surveillance.
- Verified platforms that protect sovereignty.
- Recognition rituals that feel personal and seamless.

### Sentient Supply Chains

- Jewelry & Watches
- High-End Furniture and Fine Wines
- Adaptive Ateliers

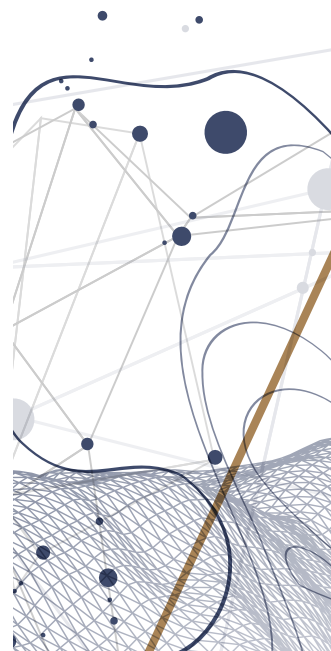
- Proof of provenance and resilience.
- Scarcity framed as resilience, not fragility.
- Automation that amplifies craft instead of erasing it.

### Conscious Luxury Networks

- Wellness & Longevity Hospitality
- Cultural Preservation Collectives
- Regenerative Membership Platforms

- Status through contribution, not possession.
- Verified proof of ecological and cultural impact.
- Memberships that merge vitality, community, and heritage.

06



## Opportunity Areas

## Model

## Feature

- Sovereignty dashboards that present data control as a luxury artifact.
- Identity-driven clienteling that blends AI anticipation with human interpretation.
- Negotiated exclusivity where digital twins curate offers in real time.

A blended ecosystem where digital twins broker access across fashion, travel, and culture while human consultants translate algorithmic precision into ritual and meaning. Luxury becomes authorized, not simply purchased.

- Digital twin previews and phygital wardrobes.
- AI orchestration supported by ritual handoffs.
- Quantum-secured ID wallets that ensure sovereignty.

- Tokenized provenance dashboards.
- Adaptive atelier storytelling that links sourcing to climate context.
- Resilient logistics orchestration as a marker of prestige.

Supply webs behave like living systems that reroute, regenerate, and anticipate disruption. Consultants translate systemic adaptation into narratives of rarity and continuity.

- Blockchain and digital product passport tags verifying origin and craft.
- Limited drops tied to regenerative milestones.
- Climate-adaptive atelier collections that integrate biotech materials.

- Contribution-as-currency platforms that tokenize impact.
- Ritualized collective acts of regeneration.
- Conscious membership ecosystems that bridge well-being with stewardship.

Prestige is redefined through stewardship. Membership signifies regeneration, cultural preservation, and belonging. The rarest luxury is collective recognition of contribution.

- Tokenized impact dashboards that show ecological returns.
- Regenerative retreats and cultural rituals.
- AI wellness concierges that align vitality and planetary care.

# Future Scenarios

## 01 Autonomous Identity Ecosystems

Luxury advances into self-sovereign identity systems where digital twins act as curators, negotiating access across fashion, travel, hospitality, wellness, and cultural spaces. Digital twins orchestrate access through values, heritage, emotional cues, and aesthetic alignment. They create anticipation without exposure and recognition without surveillance.

The central tension is disintermediation. As orchestration replaces manual decision-making, brands must re-humanize interpretation so that trust, ritual, and cultural nuance remain central to the experience.

## 02 Sentient Supply Chains

Supply chains evolve into adaptive organisms that sense, reroute, and regenerate under stress. Resilience becomes the signal of rarity.

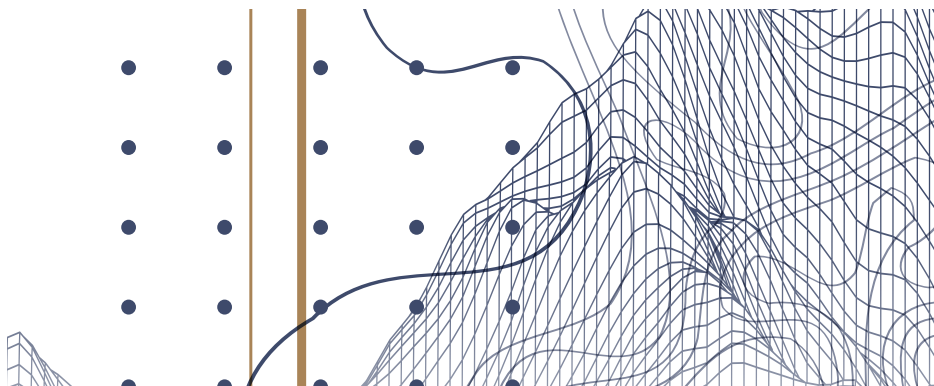
Adaptive ateliers balance data and craft, preserving heritage while navigating material shifts, climate conditions, and logistical volatility. These supply webs position continuity as a form of prestige; scarcity becomes intentional and verifiable.

## 03 Conscious Luxury Networks

Well-being, culture, and sustainability converge into collective networks where contribution becomes the new status marker.

Membership signifies participation in restoring ecosystems, preserving cultural legacies, and advancing longevity. Luxury becomes anticipatory and restorative, blending vitality with regeneration. Status emerges from stewardship, not possession.

08



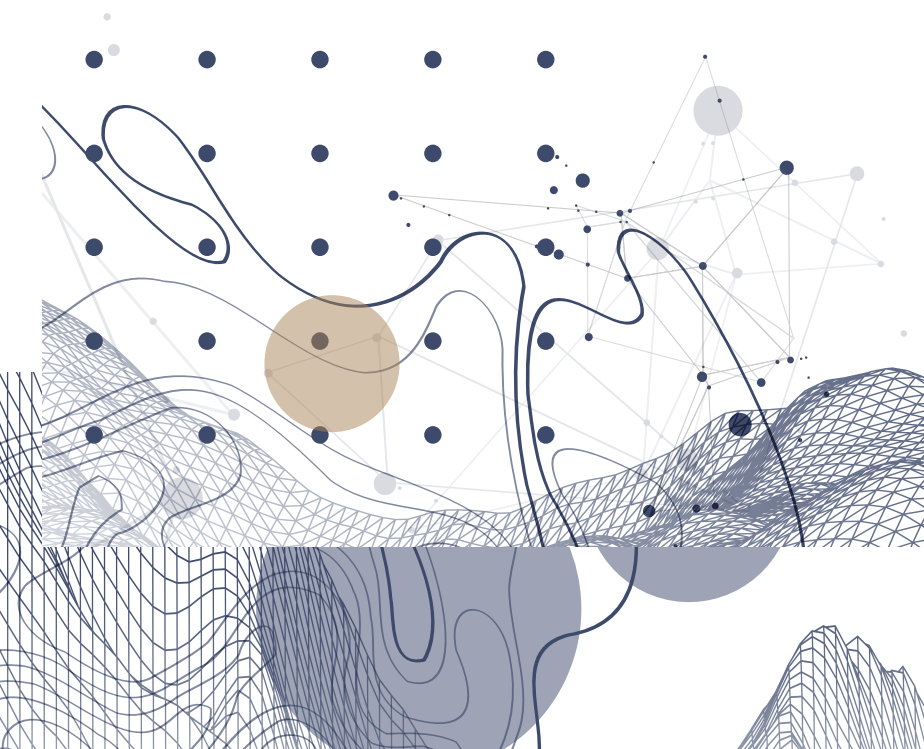
“

Luxury is not about the past, it's about inventing a future that people don't yet know they desire.

— **Sidney Toledano**, Former chairman and CEO of LVMH Fashion Group

Toledano's perspective captures the modern paradox. Heritage alone does not sustain aspiration, and technology alone cannot manufacture it. Digitally enabled luxury depends on anticipating desire before it surfaces. It requires systems that orchestrate identity, provenance, and contribution in ways that feel aspirational, human, and emotionally fluent.

Innovation succeeds when intelligence feels like empathy. Precision becomes a form of care and orchestration becomes an extension of cultural understanding.





# 01

# Autonomous Identity Ecosystems

## *When Luxury Negotiates on Your Behalf*

The next horizon of luxury is autonomous orchestration. Digital identity twins act as curators and guardians, brokering access across fashion, travel, hospitality, and culture.

Clients do not receive recommendations. They encounter experiences already aligned with their heritage, values, and emotional thresholds. Anticipation becomes orchestration. Access to limited pieces, tailored journeys, or private previews is secured before desire is voiced. An invitation does not appear by coincidence. It materializes because an identical twin has already authorized it.

This reframes exclusivity.

Luxury begins to delegate trust to identity systems that negotiate on the client's behalf. The challenge is ensuring frictionless systems remain saturated with craft, ritual, and recognition. The human moment shifts from a point of sale to a point of significance. It becomes a ceremony that affirms why luxury matters when technology carries the negotiation.

# 75%

of SCADask survey respondents expressed interest in digital enhancements that personalize their luxury experiences, indicating strong readiness for identity systems that anticipate needs and negotiate access on their behalf.

# The Sovereign Luxury Client

The sovereign client is digitally fluent, high spending, and consistently resistant to opacity. They expect identity ecosystems that feel intuitive, accountable, and visibly sovereign.

They want anticipation without surveillance and recognition that feels more personal than programmed.

Over  
**92%**

of SCADask survey respondents said privacy and data security are important when interacting with luxury brands, reinforcing the need for sovereign platforms that protect trust at every step.

## Brand Opportunity Areas

- VIP consultations evolve through identity intermediaries.
- Digital twins filter offers through cultural, ecological, and heritage thresholds.
- Human consultants interpret orchestration into moments of craft, story, and emotion.

## User Concerns

- Overreach erodes trust.
- Opaque personalization feels manipulative.
- Clients want systems that protect sovereignty while still delivering recognition and exclusivity.

## Experience Attributes

- Identity ecosystems anticipate desire without prompting.
- Limited editions are pre-authorized.
- Services unlock seamlessly.
- Private previews arrive at the right moment.
- Experiences feel curated, sovereign, and effortless.

## User Preferences

- Clients prioritize guardianship, selective transparency, and frictionless anticipation.
- They seek brands that express empathy through ritual, craftsmanship, and cultural fluency.

# User Service Journey

- **Data Sovereignty and Consent**

Clients control their digital twins through dynamic permissions. Contracts define what data is shared, with whom, and for how long. Every negotiation is auditable, ensuring anticipation never compromises privacy.

- **Experience Orchestration**

Identity twins transform fragmented signals into anticipatory flows. Product launches, exhibitions, and retreats are secured and aligned before the client expresses interest.

- **Ritualized Choice and Human Connection**

As orchestration removes friction, the human moment evolves. Consultants interpret what the identity system has negotiated. They ritualize selection and transform efficiency into meaning.



# Stages of the Identity Ecosystem

Stages	Consumer	Frontstage	Backstage
<b>Data Sovereignty</b>	Sets permissions through sovereign dashboards.	Clear interfaces show active contracts.	Blockchain & quantum-secured ID wallets enforce sovereignty.
<b>Orchestrated Alignment</b>	Moves without decision fatigue.	Environments adapt to context and mood.	Identity twins integrate biometric, cultural, and environmental inputs.
<b>Identity-Gated Access</b>	Receives invitations and previews based on identity alignment.	Consultants reinforce exclusivity through story and ceremony.	Distributed archives and adaptive supply webs maintain rarity.
<b>Ritualized Affirmation</b>	Feels recognition moments are personal and ceremonial.	Atmospheres signal belonging.	AI interprets emotional cues to refine engagement.
<b>Continuous Resonance</b>	Moves seamlessly across fashion, travel, wellness, and cultural experiences.	Journeys feel private, intuitive, and consistent.	Identity systems negotiate opportunities across industries in real time.



# Opportunities in the Identity Ecosystem

## Pain Points

- Personalization feels like surveillance when opaque.
- Over-targeting breaks trust.
- Excess choice dilutes anticipation.
- Ubiquity erodes rarity.

## Opportunity Questions

- Data Sovereignty at Scale** — How might brands deliver value while ensuring clients remain fully sovereign?
- Identity Concierge** — How might orchestration merge intelligence with rituals of human interpretation?
- Negotiated Exclusivity** — How might ecosystems curate scarcity, so that access itself becomes a form of luxury?

14





# Data Sovereignty at Scale

## *The Luxury of Control — Sovereignty with Trust*

Trust collapses when data use is opaque. Sovereign identity ecosystems address this by replacing static privacy checklists with dynamic permissions. Dashboards become luxury artifacts. They express control through clarity and refinement, and align with brand identity while reinforcing accountability. Sovereignty becomes a signal of empowerment. Exclusivity is defined not only by what is accessed but by how it is authorized.

Over

# 68%

of SCADask survey respondents want enhanced digital experiences such as personalized recommendations or virtual previews, signaling that anticipation must feel curated without crossing into surveillance.



# Identity Concierge

## *The Luxury of Understanding — Orchestration with Human Ritual*

The identity concierge bridges system intelligence with human interpretation. Consultants translate algorithmic precision into ceremonies of meaning. They turn signals into stories and align orchestrated recommendations with cultural nuance, heritage, and emotional context.

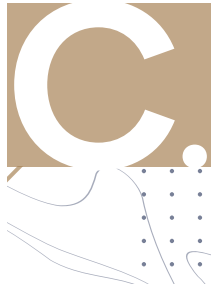
Orchestration needs interpretation. Without it, journeys feel mechanical. With it, luxury remains alive. Clients experience recognition as an act of care, not computation.

16

# 52%

of SCADask survey respondents are interested in AI-driven personalization, but only when it feels aligned with their values and does not feel overwhelming or intrusive.



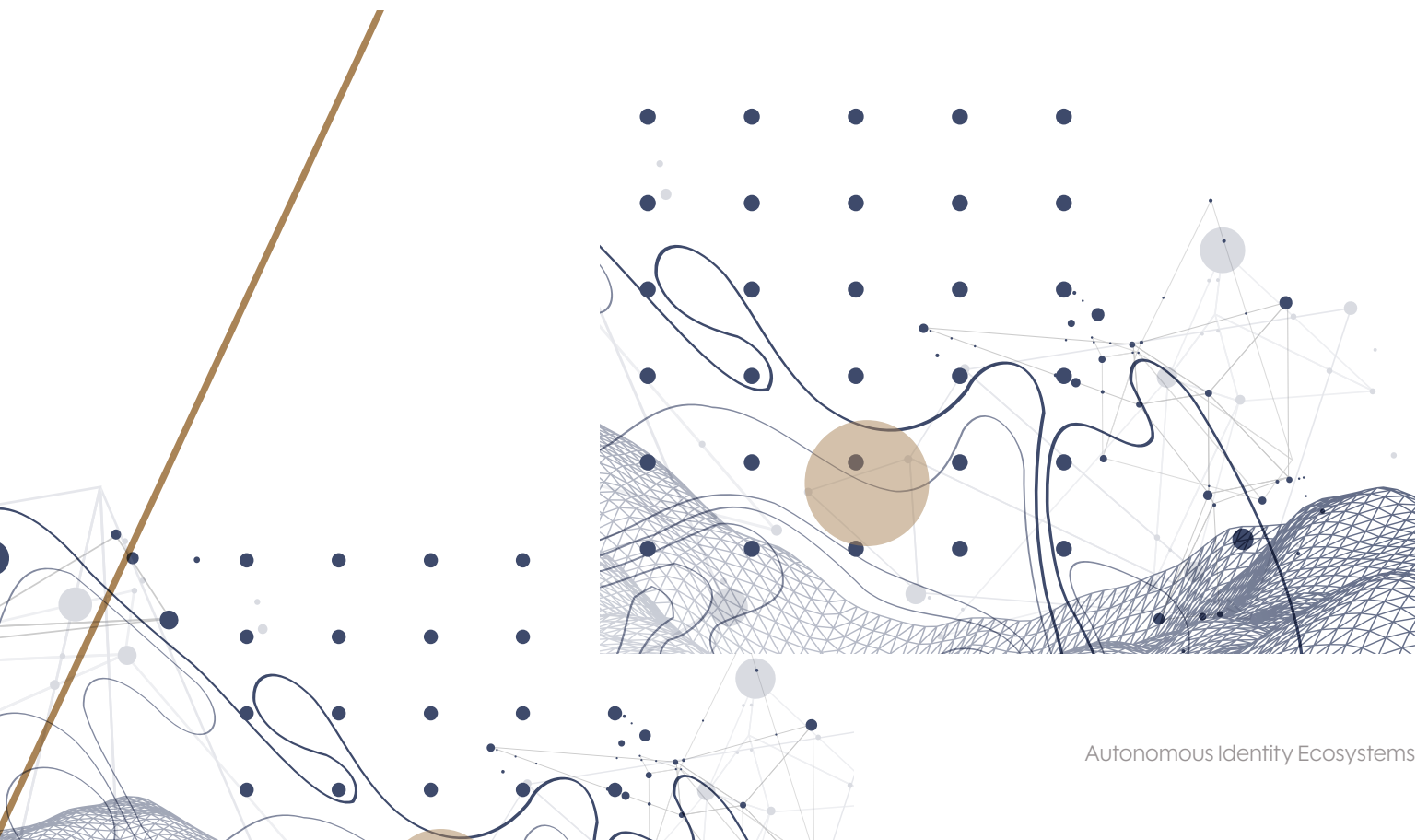


# Negotiated Exclusivity

## *The Luxury of Belonging — Scarcity Curated, Access Authorized*

Exclusivity is shifting from price-based segmentation to alignment-based authorization. Access is earned through verified values, cultural stewardship, and ecological contribution.

Identity ecosystems curate scarcity by authorizing access rather than prompting acquisition. Entry becomes a ritual of belonging. The rarest privilege becomes recognition through alignment.



# Desired Outcome

## *Authorized Luxury*

Luxury becomes anticipatory without intrusion, fluid without fatigue. Prestige is measured by how much agency the client retains in being recognized.

Optional:

Authorized luxury reframes the experience.

- The client remains sovereign.
- The system remains discreet.
- Recognition becomes intentional and ethical.

This establishes a new contract of trust: the brand sees the client clearly, but never more than the client allows.



18

The future of discovery is about trust. You can't just throw products at people. Systems will need to understand identity and values, and deliver in ways that feel respectful.

— **Julie Bornstein**, Founder & CEO, Daydream



# Action Guide

## Make Sovereignty Visible

Create client-facing consent dashboards that turn data control into a luxury experience. Clear permissions, real-time contracts, and elegant interfaces make privacy feel prestigious and intentional.

- A. **Use Case / Signal:** Aura Blockchain Consortium (LVMH, Cartier), 2024
  - Shared standards for digital authenticity and traceability elevate consent and verification into visible markers of trust.

## Humanize AI Orchestration

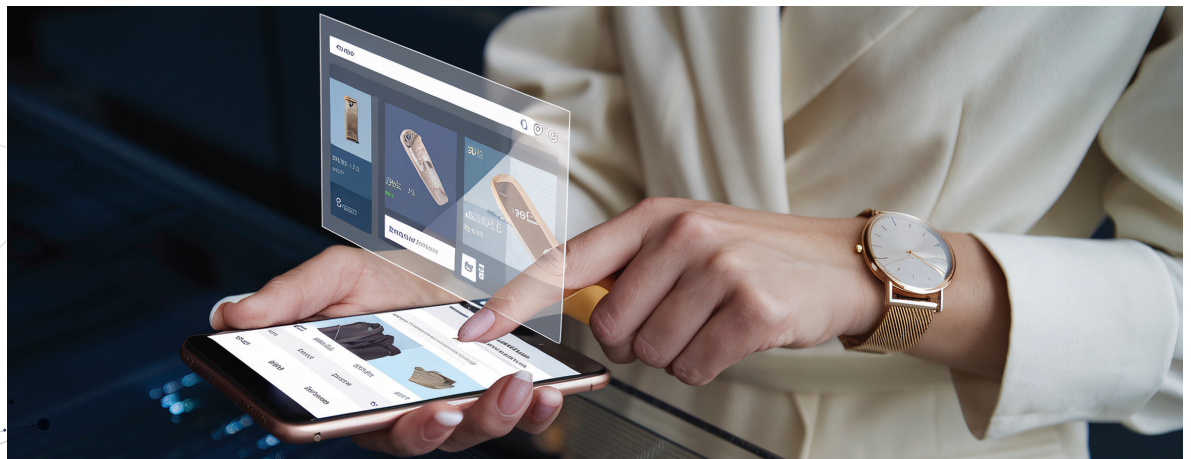
Train consultants to translate AI-generated signals into moments of story, ritual, and emotional recognition. Human interpretation keeps anticipation from feeling mechanical and preserves the intimacy of luxury service.

- B. **Use Case / Signal:** Gucci and Farfetch, 2025
  - AI-assisted clienteling tools predict intent, while consultants interpret recommendations into personal rituals that maintain human touch.

## Authorize Access Through Alignment

Shift exclusivity from spend-based tiers to verified cultural and ecological alignment. Identity ecosystems grant access based on values and contribution, turning recognition into a form of belonging.

- C. **Use Case / Signal:** Patagonia Membership and Prada Re-Nylon Initiatives, 2025
  - Priority access is granted to clients who participate in regenerative programs, reframing exclusivity around stewardship.





Technology should not replace the dream. It should make the dream more precise, more desirable, and more lasting.

— Bernard Arnault, Chairman and Chief Executive, LVMH

# 02

## Sentient Supply Chains

### *Resilient Luxury — Adaptive Systems in an Age of Disruption*

Climate volatility, geopolitical shifts, and resource constraints expose the fragility of traditional supply chains. Luxury must evolve its backstage into adaptive systems that can sense, respond, and regenerate.

20 Sentient supply chains behave like living organisms. They detect disruption, reroute materials, and adjust production with minimal friction. Adaptive ateliers blend data and craft, preserving heritage while navigating fluctuating conditions.

For clients, provenance becomes prestige. Knowing that a piece was grown, crafted, and delivered through regenerative systems strengthens trust and value. For brands, resilience is both an operational necessity and an emotional signal of continuity.

# 81%

of SCADask survey respondents said product origin and authenticity are important when buying luxury, underscoring why resilient and transparent supply systems have become central to trust.

# The Provenance-Seeking Luxury Client

The provenance-seeking client values craftsmanship, lineage, and ecological intention. Rather than overwhelming them with technical detail, transparency deepens their emotional connection. They expect systems that clearly and intentionally reveal origin, meaning, and continuity, desiring a resilience that comes with authenticity and proof of origin that feels personal, not merely procedural. They want resilience with authenticity.

Over  
**92%**

of SCADask survey respondents said privacy and data security are important when interacting with luxury brands, reinforcing the need for sovereign platforms that protect trust at every step.

## Brand Opportunity Areas

- Use DPPs and blockchain to elevate provenance into a status marker.
- Position adaptive ateliers as interpreters of resilience and heritage.
- Curate scarcity as intention, not fragility.

## User Preferences

- Clients still prioritize value, craftsmanship, and heritage, but rising ecological uncertainty adds resilience as a new differentiator.
- Digital orchestration may streamline delivery, but emotional connection comes from visible craft, origin, and adaptation.

## User Concerns

- Counterfeits and unverifiable claims undermine trust.
- Overly technical transparency can become overwhelming or confusing.
- Automation risks flattening the emotional intimacy of craft and origin.

# User Service Journey

- **Awareness and Education**

Clients explore provenance dashboards that reveal sourcing regions, artisans, and material histories. Learning becomes an act of appreciation. They see how heritage is preserved through resilience and adaptive craft.

- **Co-Creation and Product Development**

Clients share aesthetic, ecological, and lifestyle cues that guide production. Adaptive ateliers merge these preferences with real-time conditions. Personalization becomes participatory and responsible.

- **Discovery and Acquisition**

Intelligent concierges present limited releases verified through digital product passports. Clients trace ecological impact before committing. Every acquisition becomes ceremonial, grounded in authenticity and visible care.



# Stages of the Identity Ecosystem

Stages	Consumer	Frontstage	Backstage
<b>Awareness</b>	Explores provenance dashboards to understand sourcing, craft, and lineage.	Storytelling connects heritage to present systems.	Blockchain and AI verify origins.
<b>Connection</b>	Feels compelled to support regenerative sourcing and authentic craft.	Interface previews adaptive atelier stories that respond to shifting conditions.	Systems translate engagement into provenance insights.
<b>Co-Creation</b>	Shares preferences and ecological values.	Consultants shape concepts that reflect intention and cultural context.	Predictive models align materials, artisans, and timelines.
<b>Discovery</b>	Views adaptive editions and previews.	Platform curates scarcity drops and provenance updates.	AI adjusts supply routing to maintain resilience and authenticity.
<b>Acquisition</b>	Finalizes purchase and verifies certificate.	Consultants deliver provenance rituals that affirm craft and continuity.	Ledger records ownership and resilience metrics.



# Opportunities

## A. The Provenance Passport

### Pain Point

- Transparency is rising, but consumer understanding of blockchain-based provenance remains low. Education and trust are the main barriers.
- *How might verification become a symbol of sophistication, turning provenance into a desirable part of the luxury ritual?*

## B. Adaptive Atelier Concierge

### Pain Point

- Automation risks flattening the artistry behind adaptive systems. Clients fear that greater efficiency may diminish the human intimacy of craft.
- *How might resilience feel personal rather than mechanical, reinforcing emotional connection?*

## C. Resilience Ledger

### Pain Point

- Most transparency ends at certification. Clients want proof of continuous regenerative impact, not static claims.
- *How might provenance evolve with every interaction, creating a living record of rarity and responsibility?*

24





# The Provenance Passport

## *The Luxury of Control — Personalization with Privacy*

The Provenance Passport replaces opaque certificates with dynamic narratives of creation. Each stage of sourcing, design, and production is verified and archived through digital product passports.

For clients, scanning the passport becomes a ritual of ownership. They access information about artisans, materials, and environmental impact. The story strengthens their relationship with the object.

For brands, transparency becomes refinement. Compliance is elevated into prestige. As blockchain identity and authentication merge, provenance shifts from documentation to storytelling. Clients experience how a piece became resilient in addition to where it originated.

“

Blockchain can enable digital passports for luxury items, tracking provenance, ownership, and interactions.

— **Nye Warburton**, Chair of Interactive Design and Game Development and Applied AI, SCAD



# Adaptive Atelier Concierge

## *The Luxury of Connection — Emotionally Intuitive Experiences*

The Adaptive Atelier functions as a living studio. It responds to climate signals, migration flows, and material availability. AI coordinates supply while artisans preserve heritage through interpretation and craft.

Rather than replacing creators, the system amplifies intuition. It may recommend climate-appropriate fibers or propose alternate finishes when resources tighten. Every adaptive shift becomes part of the story.

An interpretive concierge, the atelier narrates adaptation and makes resilience tactile, intimate, and emotionally resonant.



26

When you have trust and you get that trust in place throughout the company, people are empowered — people are free.

— **Angela Ahrendts**, CEO Burberry, former SVP Apple Retail



# Resilience Ledger

## *The Luxury of Continuity — Rarity That Endures*

The Resilience Ledger extends provenance beyond the point of sale. Each restoration, repair, or renewal adds information to a product's evolving lifecycle.

Ownership becomes participation. Clients see how their engagement contributes to durability and ecological impact. Each update is authenticated and time stamped. The ledger becomes a living archive of care, craftsmanship, and longevity.

For brands, the ledger creates a regenerative feedback loop. It provides insight into durability, maintenance patterns, and environmental performance. Transparency shifts from static claim to continuous proof.



Brands will need to adapt to conversational transparency just as they adapted to social storytelling.

— Julie Bornstein, Founder & CEO, Daydream

# Desired Outcome

## *Resilient Luxury*

Luxury allows technology to recede while intelligence shapes every layer of creation and delivery, enabling supply webs to quietly think, respond, and regenerate, all while craftsmanship remains visible, personal, and human. In this new dynamic, resilience becomes an aesthetic that signals heritage can flex without fracturing, continuity can coexist with adaptation, and luxury can sustain ecosystems rather than strain them, ensuring clients move through systems where transparency feels intuitive and regeneration feels natural, and every touchpoint reflects stability, care, and trust.



# Action Guide

## Balance Technology with Human Touch

Integrate adaptive intelligence into service design so automation enhances, not replaces, the warmth of craftsmanship. Train consultants to translate data-driven insights into meaningful rituals of recognition and care.

- A. **Use Case / Signal:** Imma x Prada, 2024
  - A virtual model collaborates with human stylists, blending AI precision with human emotion to create adaptive campaigns that feel personal rather, not programmatic.

## Prioritize Craftsmanship and Authenticity

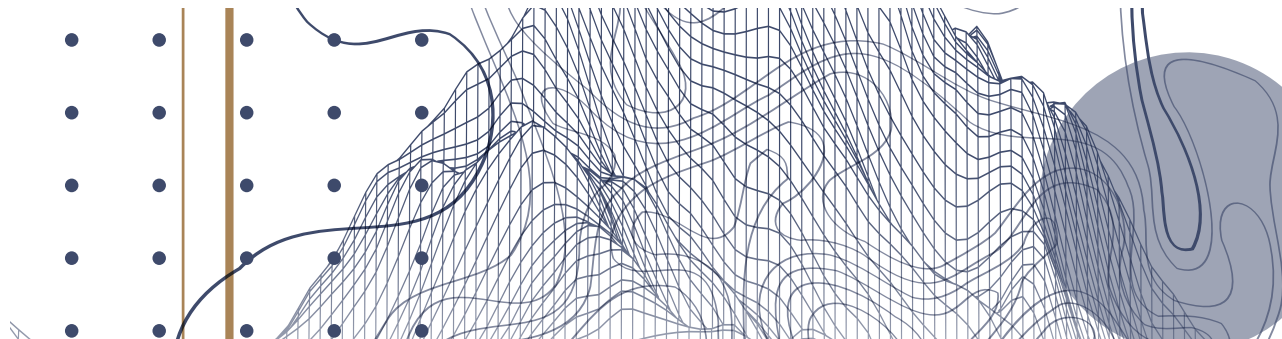
Use Digital Product Passports (DPPs) and blockchain records to showcase origin, process, and repair history. Transparency becomes a language of exclusivity, where proof of care is as valued as the product itself.

- B. **Use Case / Signal:** Burberry Trench ReCraft, 2023
  - Clients trace repair, reuse, and material sourcing through a digital certificate that validates regenerative design while reinforcing heritage.

## Design for Emotional Resilience

Turn repair, restoration, and continuation into luxury experiences. Each revival moment becomes a story of legacy and stewardship, extending value through continuity.

- C. **Use Case / Signal:** Bulgari “Forever Gems,” 2025
  - Vintage pieces are reimaged with recovered stones and blockchain-certified provenance, making endurance itself a hallmark of prestige.





The next generation of luxury is not about what you own, but what you enable — the futures you choose to fund and the communities you choose to sustain.

— Julie Bornstein, Founder & CEO, Daydream

# 03

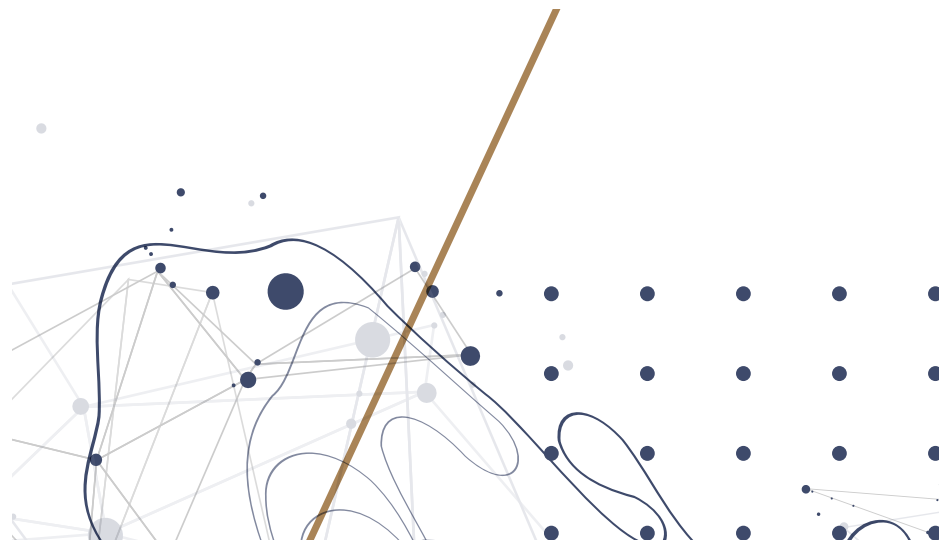
## Conscious Luxury Networks

### The Future of Belonging — Status Through Stewardship

30

Luxury is shifting from possession to participation. Emerging generations define status through contribution, belonging, and shared stewardship. In a world shaped by ecological volatility and rising interest in personal longevity, clients measure value through the futures they sustain.

Conscious luxury networks merge personal vitality with planetary resilience. Membership becomes a passport into regenerative retreats, cultural preservation collectives, and climate-positive ateliers. The rarest luxury is participation in ecosystems that endure.



# The Stewardship Luxury Client

The stewardship-driven clients are high-spending entrepreneurs, executives, and cultural leaders who treat contribution as an expression of identity; they expect wellness, longevity, and cultural engagement to produce visible and verified impact. Their desire is for well-being with purpose, requiring proof that their participation generates real, demonstrable outcomes.

# 72%

of global consumers now say that improving their health and well-being is their top personal priority.

## Experience Attributes

- Integrated wellness and ecological retreats.
- Tokenized proof of contribution and impact dashboards.
- Collective ceremonies that reinforce belonging.
- AI-supported pathways that align vitality with stewardship.

## Brand Opportunity Areas

- Build integrated networks combining longevity, sustainability, and culture.
- Use AI wellness concierges to guide restorative pathways.
- Authenticate contribution as a core part of membership value.

## User Preferences

- Skepticism toward sustainability claims without verification.
- Aversion to wellness experiences lacking scientific or clinical grounding.
- Distrust of programs that appear performative or disconnected from real impact.

## User Concerns

- Skepticism toward sustainability claims without verification.
- Aversion to wellness experiences lacking scientific or clinical grounding.
- Distrust of programs that appear performative or disconnected from real impact.

# User Service Journey

- **Contribution Gateways**

Entry into the network is authenticated through ecological, cultural, or community-based contribution. Membership reflects stewardship, not spending.

- **Integrated Vitality-Orchestration**

Wellness, sustainability, and culture converge. Clients access gene-tailored health monitoring, regenerative retreats, and curated cultural initiatives. Experiences are orchestrated so that personal vitality reinforces ecological and cultural restoration.

- **Reciprocal Recognition**

Prestige is reinforced through ritualized acknowledgment. Clients are recognized for their purchases and their participation in regenerative futures. Recognition becomes intimate, collective, and emotionally resonant.



# Stages of Conscious Luxury Networks

Stages	Consumer	Frontstage	Backstage
<b>Contribution Gateways</b>	Gains entry through verified contribution.	Impact dashboards display ecological and cultural outcomes.	Smart contracts and tokenized ledgers authenticate contributions.
<b>Collective Alignment</b>	Experiences blend personal wellness with regeneration.	Integrated itineraries connect wellness, culture, and sustainability.	AI systems aligns health data with ecological and cultural pathways.
<b>Access Through Belonging</b>	Receives invitations based on contribution and value alignment.	Consultants frame access as recognition.	Networks curate access based on regenerative thresholds.
<b>Ritualized Recognition</b>	Recognized through ceremonies and symbolic artifacts.	Events and cultural rituals reinforce belonging.	Contributions are logged into digital heritage archives.
<b>Continuous Regeneration</b>	Moves through ongoing cycles of giving and receiving.	Experiences remain restorative and sonal.	Networks allocate resources dynamically to sustain ecosystems.



# Opportunities in Conscious Luxury Networks

## A. Contribution as Currency

### Pain Point:

- Impact is hard to verify, and ownership-based exclusivity feels limited.
- Clients want evidence that their spending shapes ecological or cultural outcomes.
- *How might contribution become a visible status marker that restores ecosystems and sustains culture?*

## B. Regenerative Rituals

### Pain Point:

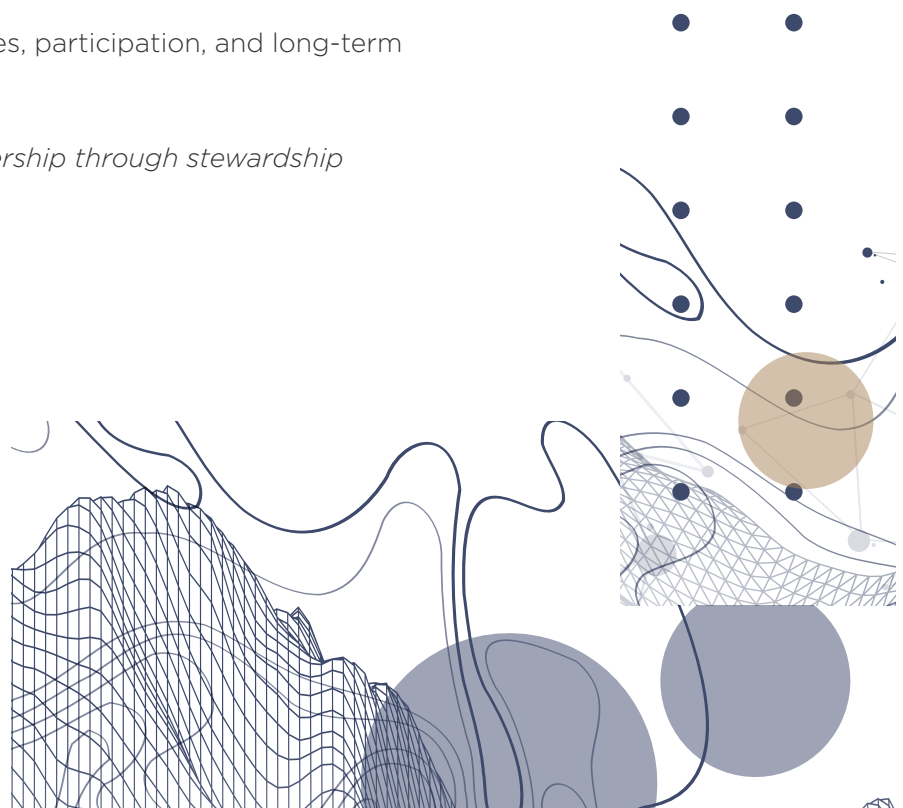
- Individual experiences lack shared meaning and emotional depth.
- Clients seek moments that acknowledge their role in collective renewal.
- *How might collective regenerative actions become rituals that strengthen belonging?*

## C. Networks of Belonging

### Pain Point:

- Traditional exclusivity excludes rather than connects.
- Clients want access that reflects values, participation, and long-term responsibility.
- *How might networks redefine membership through stewardship and aligned values?*

34





# Contribution as Currency

## *The Luxury of Impact — Status Through Stewardship*

In the next chapter of luxury, value is defined by participation, where clients demand visible, verifiable outcomes that reflect their ecological and cultural commitments. Prestige, regenerative ateliers, preservation funds, and restoration programs serve as contributions authenticated via tokenized impact ledgers. These expressions of identity allow clients to participate in a lasting future where contribution and stewardship are the currencies that mark status.



Contribution reframes exclusivity. Prestige is no longer what you own, but what you enable.

— Amy Nelson Bennett, CEO, Positive Luxury



# Regenerative Rituals

## *The Luxury of Belonging — Prestige Through Collective Acts*

Luxury evolves from spectacle to ceremony. Clients want experiences that let them act together, whether reforesting coral reefs, restoring archives, or reviving indigenous crafts. Each gesture is authenticated through digital badges and collective ledgers that record personal and shared impact.

Such ritual replaces repetition. Ceremonial gatherings and immersive storytelling turn sustainability into a form of status. Belonging becomes meaningful because it is purposeful. The prestige lies in participation, not possession.

36



Gen Z expects proof. It's not enough to make claims — they want to see evidence that your values are real.

— **Stephanie Horton**, Senior Director Global Consumer Marketing,  
Commerce (Shopping/Payments), Google



# Networks of Belonging

## *The Luxury of Membership — Access Through Shared Futures*

Belonging becomes the new scarcity. Conscious networks unite wellness, sustainability, and culture into coherent ecosystems. Access is earned through stewardship and authenticated through contribution. Value alignment becomes the basis of invitation.

These networks blur the boundary between private club and public purpose. Clients move through regenerative retreats, cultural programs, and longevity initiatives that reflect their commitments and values. Membership becomes a living expression of responsibility rather than a symbol of separation.



Luxury is not only about beauty or rarity; it is about responsibility. That is the future of our industry.

— **Frédéric Grangié**, President, Chanel Watches & Fine Jewelry

# Desired Outcome

## *Regenerative Luxury*

Luxury becomes a system of shared responsibility where value derives from participation, and prestige is defined by how individuals sustain communities, cultures, and ecosystems. This reframes contribution as status, elevating regeneration into ritual and positioning belonging as the rarest privilege, allowing clients to move through ecosystems where personal vitality and planetary care reinforce one another, proving that influence is ultimately measured by what endures.



# Action Guide

## Authenticate Contribution as Currency

Develop impact dashboards that record ecological, social, and cultural contributions as status markers. Clients trace their influence through tokenized records and collectible impact artifacts, turning stewardship into proof of prestige.

A. **Use Case:** Maison Zero Impact Ledger - LVMH, 2025

## Ritualize Collective Impact into Prestige

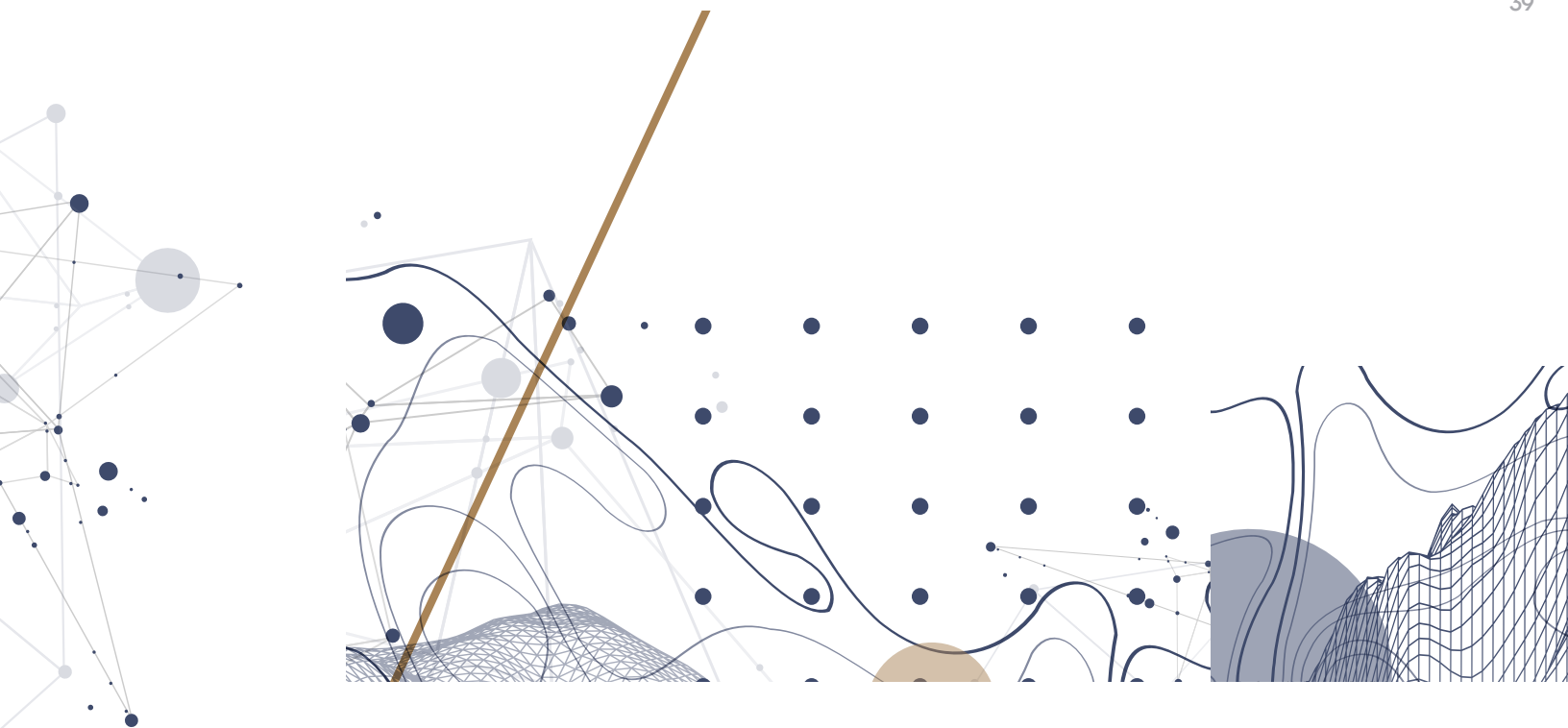
Design immersive ceremonies and cultural gatherings that celebrate regeneration. Shared experiences such as restoration events or heritage preservation rituals transform contribution into moments of belonging and recognition.

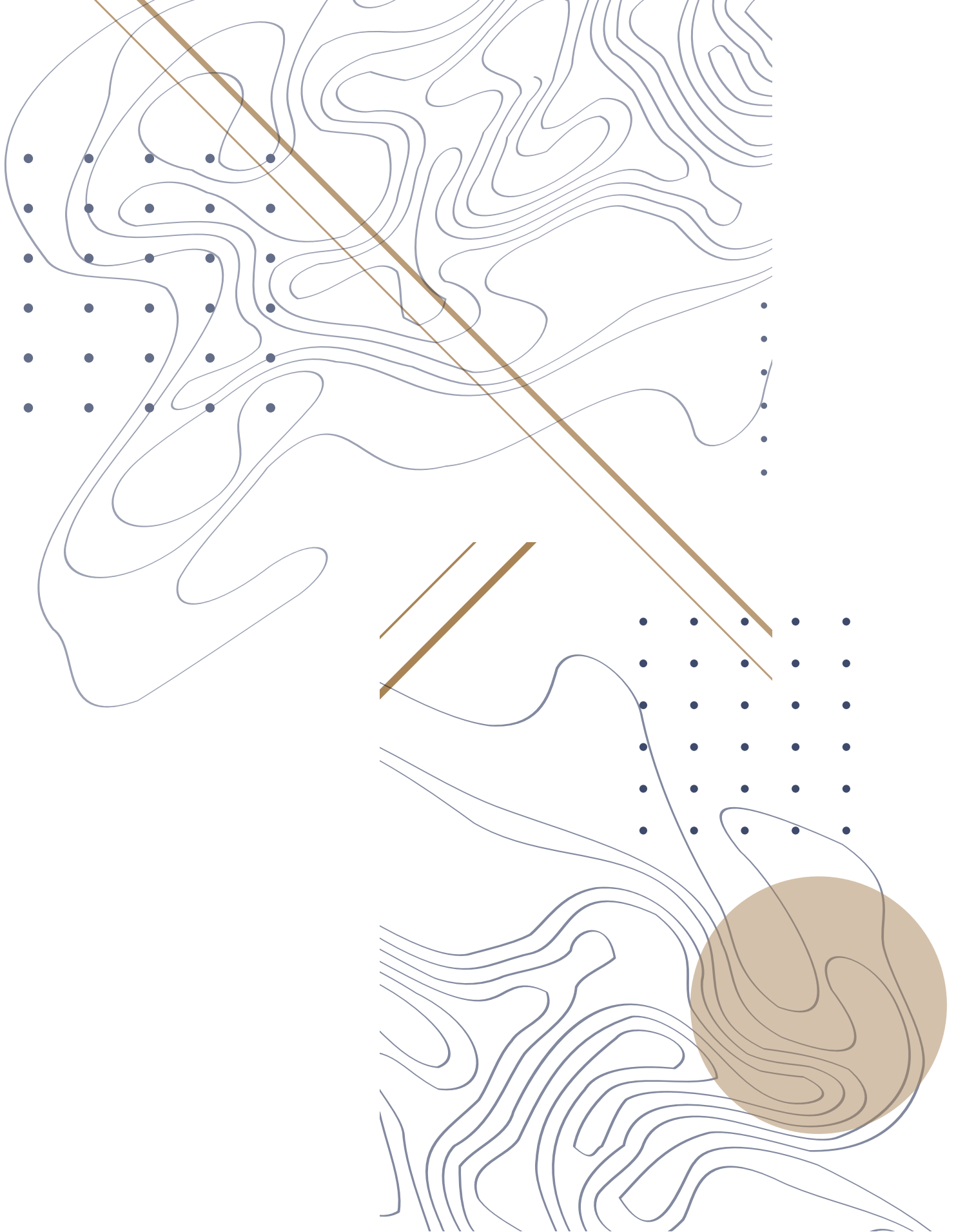
B. **Use Case:** Cartier Culture Collective - Global Cultural Preservation Program, 2024

## Design for Emotional Resilience

Create integrated membership networks that connect wellness, culture, and sustainability. Verified contribution becomes the basis of access, while AI aligns members with regenerative pathways that reflect their values.

C. **Use Case:** Positive Luxury Alliance - Shared Impact Membership Model, 2025





# Appendices

Methodology	42
Market Research	46
Scenario Solutions	53
Layers of Design	54
Personas	55
STEEPing into the Future ...	58
Journey Map	60
Acknowledgments	62
Research Team	64
References	66

# Methodology

## Research Goal

Understand how AI, blockchain, and identity technologies reshape trust and exclusivity for luxury consumers across regions.

## Secondary Research

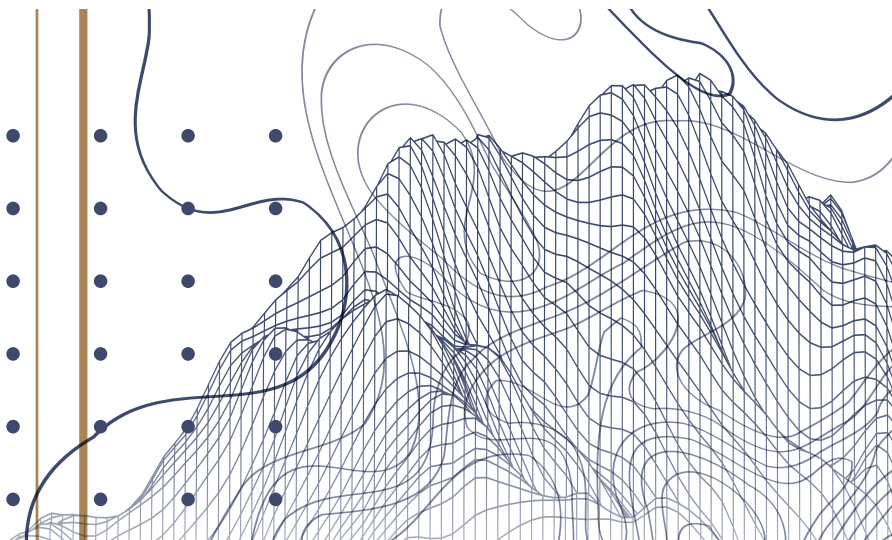
Analyzed industry reports, regulatory briefs, and trend data on digital identity, digital product passports, and adaptive supply chains. Focus areas include AI governance, data sovereignty, and provenance standards.

## Primary Research

Interviews with industry executives and surveys of aspirational and high-spending consumers revealed what makes digital luxury feel authentic, not automated.

## Affinitization

Themes of sovereignty, resilience, and stewardship emerged as core elements of the future luxury experience. These insights informed the models and scenarios in this report.



# Ideation Frameworks

Ideation frameworks explored how data sovereignty and exclusivity intersect with accessibility and resilience. They guided innovation for brands aiming to integrate emerging systems while preserving heritage and authenticity.

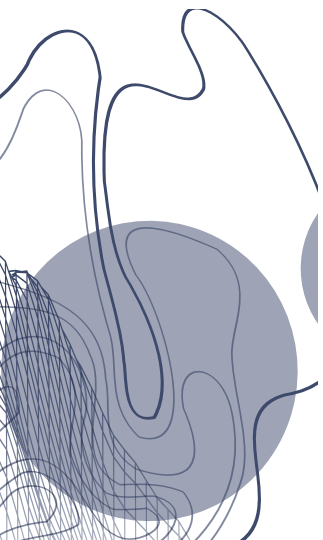
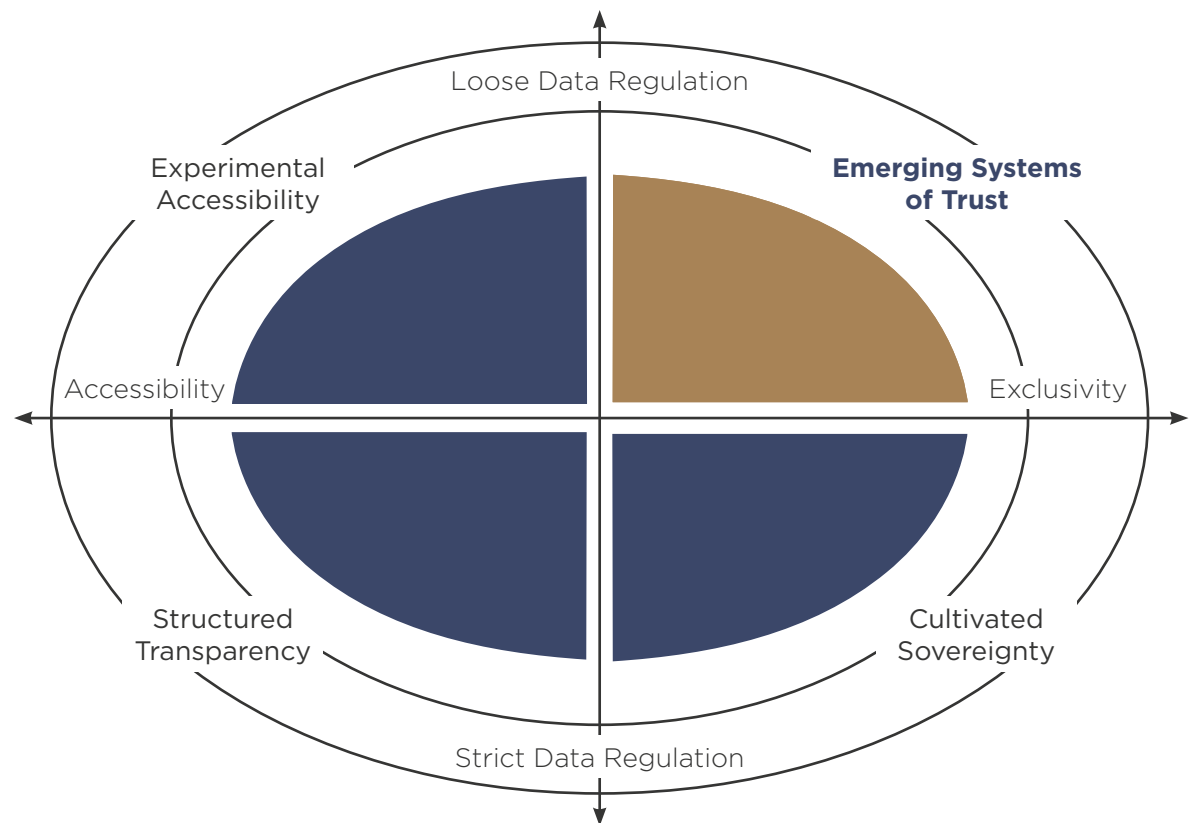
Positioning these axes revealed how brands convert systemic innovation into human-centered value. Examples include Sovereign Dashboards, adaptive sourcing networks, and regenerative supply models that maintain craft while embracing change.

## Economic Drivers

- A. Growth in experiential luxury (6-8 % CAGR through 2030) driven by hospitality and travel
- B. Provenance as both a competitive differentiator and a resilience indicator

## Political Drivers

- A. Global expansion of Digital Product Passport mandates (EU 2024 to U.S. pilot 2025)
- B. New AI governance and data sovereignty standards emphasizing explainability and consent

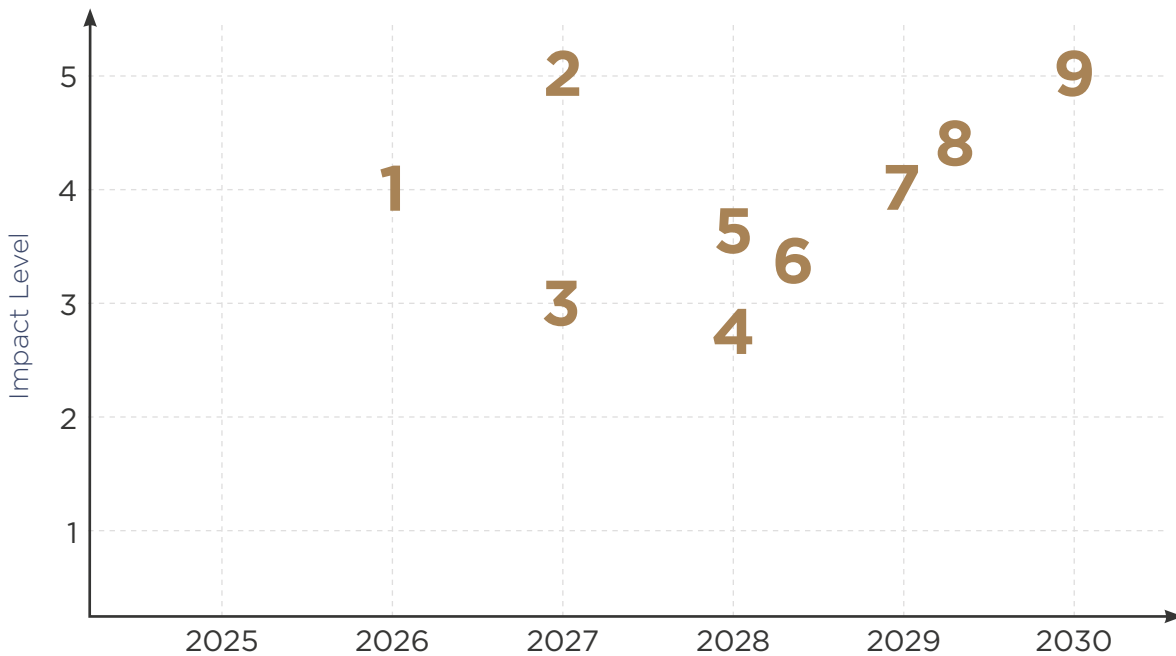


# Industry Roadmaps

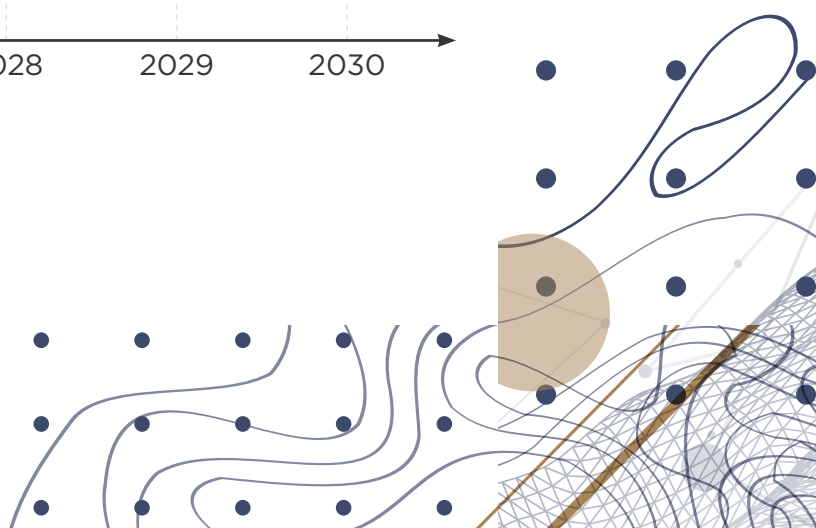
Industry roadmaps outline how today's signals scale into mature systems. Grounded in consumer data, policy trends, and innovation pipelines, they show how sovereignty, provenance, and stewardship defines the next era of luxury.

## 5-Year Horizon (2025-2030)

01. Sovereignty dashboards and verified platforms gain broad adoption.
02. Exclusive memberships include measurable impact metrics.
03. Digital twins support anticipatory shopping and phygital services.
04. Blockchain + DPP compliance becomes baseline for transparency.
05. AI personalization is balanced with ritual and human consultation.
06. Tokenized provenance certificates evolve into dynamic ledgers.
07. Adaptive ateliers respond to climate volatility through regenerative materials.
08. Regenerative sourcing appears into flagship collections.
09. Well-being networks link sustainability with longevity offerings.

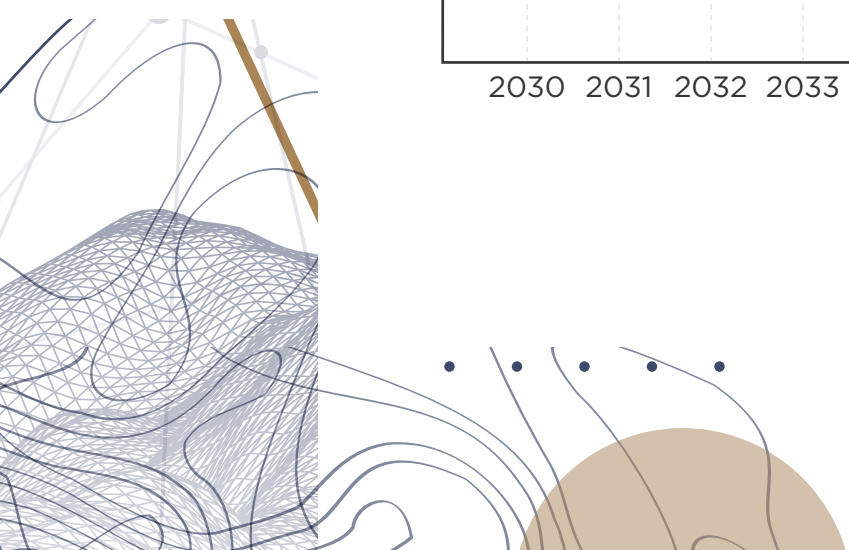
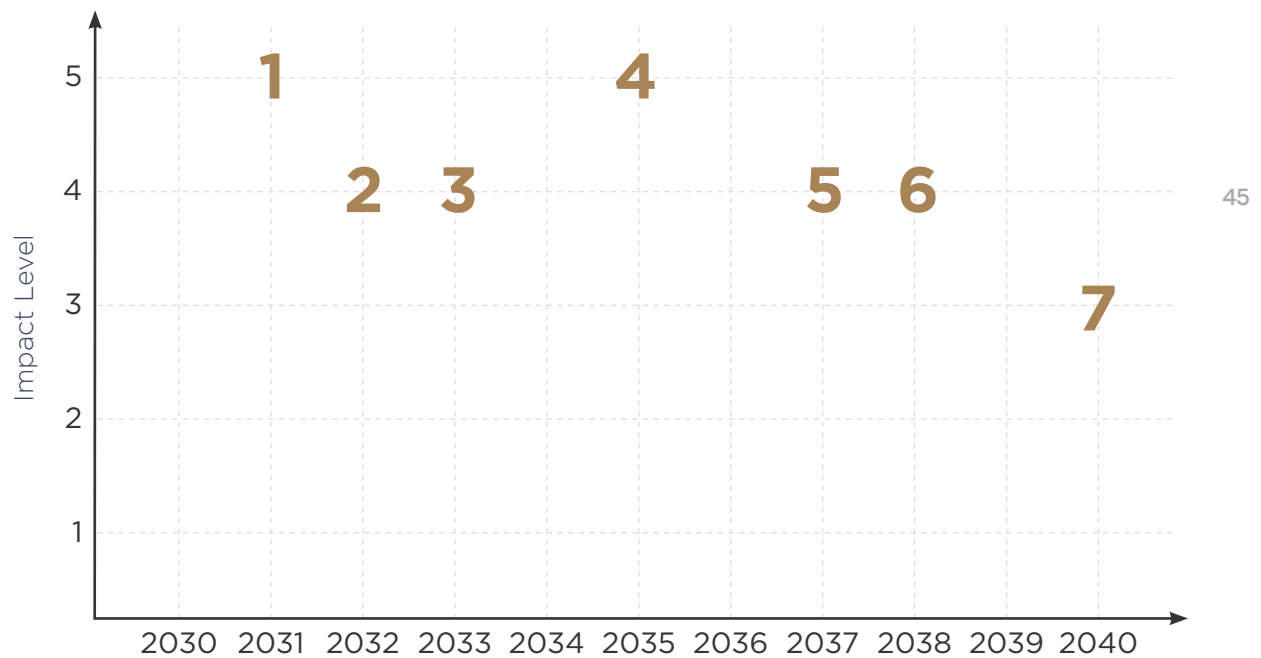


44



## 10-Year Horizon (2030–2040)

01. Post-quantum provenance and identity systems become standard.
02. Autonomous identity ecosystems become default client gateways.
03. Sentient supply chains operate as adaptive, self-healing systems.
04. Contribution-as-currency networks connect brands and clients.
05. Biotech and bio-digital ateliers expand regenerative production.
06. Longevity and well-being anchor core luxury value propositions.
07. Ritualized recognition ceremonies celebrate stewardship and legacy.



# Market Research

## Luxury Tiers

Despite global economic challenges, the luxury market continues to expand, driven by strong consumer demand across three key tiers: Aspirational Shoppers, High Spenders, and Ultra-High Spenders. Each group exhibits distinct behaviors, income levels, and generational influences, highlighting the diversity and momentum of luxury consumption.

This SCADask study surveyed **887 consumers** to understand how digital transformation is reshaping expectations across tiers.



### Ultra-High Luxury (16.3%)

Craftsmanship and heritage remain vital, yet these clients value anticipation without exposure. They look for identity-based orchestration that recognizes them while preserving sovereignty. Digital ecosystems must deliver recognition, not recommendations.



### Core Luxury (46.5%)

These consumers balance access and exclusivity. Transparency of origin, continuity, and ethical traceability define prestige. Verified provenance and AI-enhanced clienteling are no longer optional but expected.



### Accessible Luxury (37.2%)

For this segment, participation signals inclusion. They seek belonging through membership, wellness integration, and cultural storytelling, bridging luxury and lifestyle. As regenerative networks scale, this tier will shape the next wave of volume growth..



# U.S. Luxury Market

This study explores the U.S. luxury market and examines how digital innovations are transforming consumer experiences and reshaping the luxury landscape across key sectors.



Interviews conducted with industry experts and SCAD professors across luxury goods, luxury travel and hospitality, consumer marketing, technology, and design.



Luxury consumers were surveyed across major metropolitan areas and high-growth markets to understand how they define luxury, digital experience, and technology's role in both.



News articles and reports were analyzed to identify emerging patterns across brands, retail systems, and consumer behavior.

## Luxury Industries

The scope of this report spans multiple luxury sectors, with a primary focus on personal luxury goods and luxury travel and hospitality, targeting the core luxury tier, which largely includes high spenders and aspirational consumers.

47

### Luxury goods

Fashion  
Jewelry  
Watches  
Leather Goods  
Beauty  
Fragrances

### Luxury Hospitality

Hotels  
Boutiques  
Spas  
Resorts  
Wellness

# Innovation Leaders

Symbol	Meaning	Description
▲	Leader/Significant Adoption	Active implementation of AI orchestration, digital product passports, or blockchain-based provenance across product lines.
=	Follower/Developing	In pilot or early rollout; limited transparency or consumer-facing visibility.
X	Low/No Visible Activity	Minimal or no public initiatives in identity, AI, or regenerative systems.

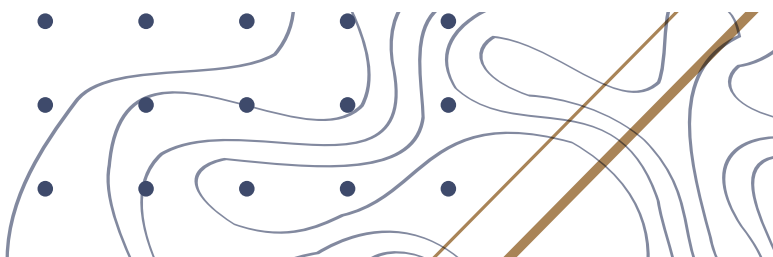
48

Brand (Luxury Hospitality)	Generative AI	AI Personalization	DPP	NFT
Balenciaga	=	▲	X	▲
Belmond	=	▲	X	=
Bottega Veneta	=	=	▲	=
Bulgari Hotels	=	▲	X	X
Burberry	▲	▲	=	▲
Celine	=	=	X	X
Chanel	=	▲	=	=
Chloé	=	▲	▲	=
Dior	▲	▲	=	▲
EDITION Hotels	=	▲	X	X
Fendi	=	▲	=	=
Four Seasons	▲	▲	X	=
Gucci	▲	▲	▲	▲
JW Marriott	=	▲	X	=

Note: Brunello Cucinelli is ultra luxury but investing in chat bot.

Brand (Luxury Hospitality)	Generative AI	AI Personalization	DPP	NFT
Le Bristol Paris	=	=	X	X
Louis Vuitton	▲	▲	▲	▲
The Luxury Collection	=	▲	X	=
Maison Margiela	=	=	X	X
Mandarin Oriental	=	▲	X	=
One&Only Resorts	=	▲	X	X
Park Hyatt	=	▲	X	X
Prada	▲	▲	▲	▲
The Peninsula	=	▲	X	X
Ralph Lauren	=	▲	=	=
The Ritz-Carlton	▲	▲	X	=
Rosewood Hotels	=	▲	X	X
Saint Laurent	=	=	X	=
Six Senses	=	▲	X	X
St. Regis	▲	▲	X	=
Tod's	=	=	=	X
Tom Ford	=	=	X	X
Valentino	=	▲	=	=
Versace	=	▲	X	=
W Hotels	=	▲	X	=
Waldorf Astoria	▲	▲	X	=

▲ - Leader/Significant Adoption      = - Follower/Developing      X - Low/No Visible Activity



# The Digital Imperative

Digitization no longer represents a technical upgrade. It defines the modern ethos of luxury. AI, provenance systems, and decentralized identity now shape how exclusivity, trust, and continuity are experienced.

Luxury is moving from digital integration to digital intelligence. Systems learn, negotiate, and curate on behalf of the client, creating new pathways for recognition, connection, and care.

## Artificial Intelligence

AI enables precision without predictability when designed ethically. It segments, forecasts, and personalizes journeys in real time, but its true value lies in anticipating desire without displacing identity.

Leading brands now train AI models on internal archives and client rituals. This produces culturally nuanced orchestration that feels bespoke and sovereign. Opaque automation, however, erodes trust faster than it creates efficiency.

## Generative AI

Generative models are reshaping creative processes and narrative design. Archive-trained visual systems expand experimentation within brand codes and support design teams by producing rapid explorations that remain aligned with heritage.

Recent data shows that 62% of luxury CMOs plan to expand in-house GenAI tools for design and storytelling by 2026, yet only 28% believe current models adequately protect IP and brand identity.

Industry consensus positions this intelligence as an amplifier, not an author. It enhances human intuition, preserves heritage, and strengthens storytelling.

50



## Digital Product Passports (DPP)

DPPs are evolving from traceability tools into living ledgers of craft and culture. They record origin, materials, and ownership through blockchain or quantum-ledger systems.

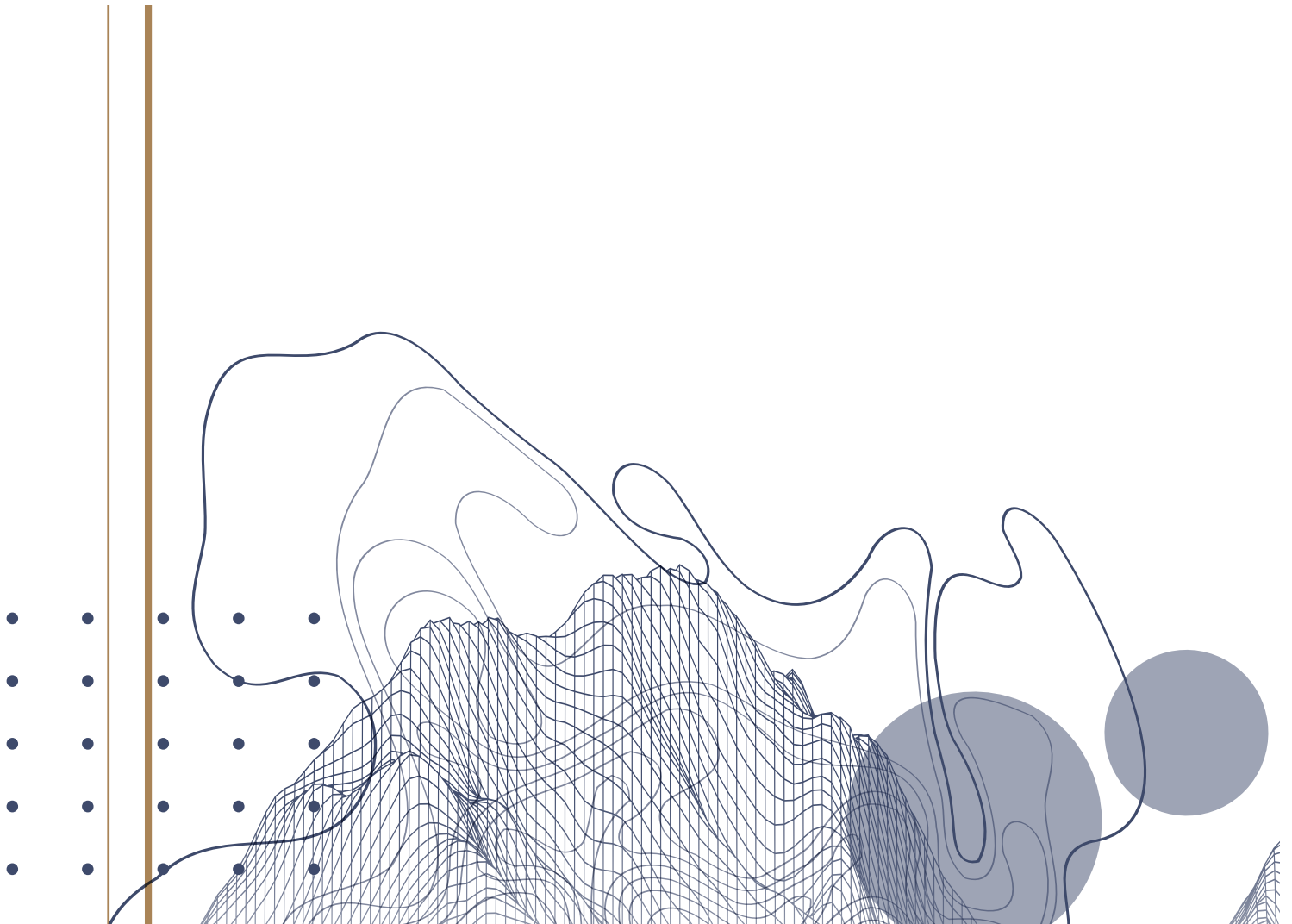
Brands like LVMH, Prada, and Kering are expanding pilots across entire product categories. Transparency becomes a status symbol.

Over time, ecological and ethical data will integrate into these ledgers, transforming ownership into stewardship and extending value beyond the point of sale.

## Decentralization and Authentication

Decentralized authentication shifts authority from brands to verified networks. Access begins to depend on alignment and contribution, not transaction size.

Blockchain and zero-knowledge protocols verify ownership and heritage, while sovereign identity wallets give clients full control of their data. Participatory provenance emerges as clients add restoration or impact records to a product's ledger, turning ownership into co-authorship of legacy.





# Scenario Solutions

## Autonomous Identity Ecosystems

Luxury moves into self-sovereign identity environments where digital twins act as curators. Desire becomes orchestration — experiences are negotiated, not sold.

- Empower clients through transparent data sovereignty.
- Train consultants as identity interpreters.
- Deliver seamless anticipation without surveillance.

## Sentient Supply Chains

Supply webs behave like adaptive organisms that sense, regenerate, and reroute. Scarcity becomes intentional. Provenance becomes a visible marker of trust.

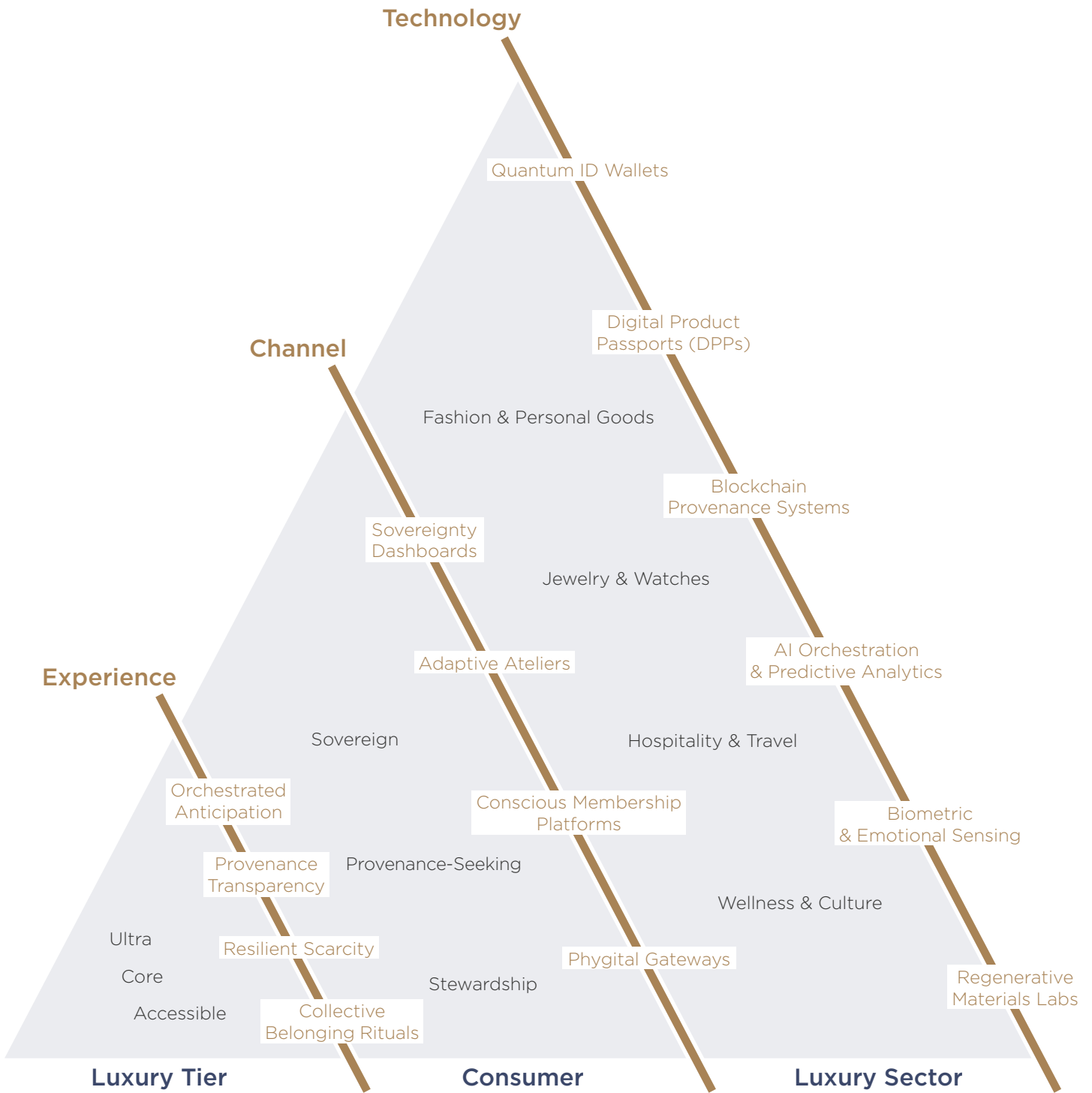
- Elevate provenance as a core prestige signal.
- Reframe resilience through adaptive atelier storytelling.
- Curate scarcity as intentional narrative.

## Conscious Luxury Networks

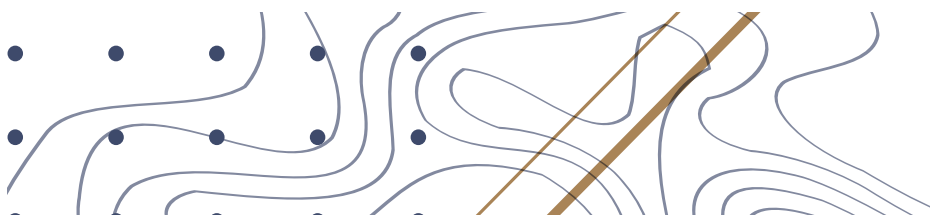
Prestige derives from stewardship. Membership signals contribution, not ownership. Luxury evolves into anticipatory, restorative networks that blend well-being, culture, and regeneration.

- Authenticate contribution as a measurable currency.
- Ritualize collective impact as moments of belonging.
- Build networks of shared futures.

# Layers of Design



54



# Personas

## Alexa

(Identity Ecosystem Client)

**Age:** 32 years old

**Income Level:** \$250,000+

**Geographic Location:** Urban, digitally fluent hubs

**Luxury Shopping Frequency:** Weekly to a few times per year

**Discovery Channels:** Digital platforms, AI shopping agents, verified platforms

**Shopping Channels:** Brand apps, sovereign dashboards, phygital previews



### Preferences

- Anticipatory shopping experiences without friction.
- High-end beauty, travel, and fashion supported by AI orchestration.

### Motivations

- Wants recognition without oversharing data.
- Expects anticipation without surveillance.
- Treats digital twins as trusted curators aligned to personal values.

### Brand Opportunity Areas

- Pilot Sovereignty Dashboards with transparent permissions.
- Offer digital-twin simulations and pre-negotiated previews.
- Train consultants to ritualize orchestration into meaning and craft.

### Pain Points

- Hyper-personalization feels intrusive when opaque.
- AI can feel manipulative when not contextualized.
- Worried exclusivity dilutes when everything is accessible.

# Richard

(Sentient Supply Chain Client)

**Age:** 48 years old

**Income Level:** \$250,000–\$500,000

**Geographic Location:** Urban, heritage-oriented markets

**Luxury Shopping Frequency:** A few times per year

**Discovery Channels:** Personal recommendations, heritage storytelling, provenance dashboards

**Shopping Channels:** Flagship stores, trusted e-commerce, authenticated resale



## Preferences

- In-store experiences rich in origin storytelling.
- Chooses heritage pieces and fine art with rarity and craft.

## Motivations

- Values legacy, authenticity, and resilience.
- Wants documented proof of origin and ecological adaptation.
- Seeks intentional scarcity rooted in craft.

## Brand Opportunity Areas

- Elevate provenance with DPPs and blockchain.
- Position adaptive ateliers as storytellers of resilience.
- Curate scarcity through regenerative milestones.

## Pain Points

- Concern about counterfeits and unverified claims.
- Fears automation erodes craft.
- Worried that “transparency” becomes noise and fatigue.

# Susan

(Conscious Luxury Network Client)

**Age:** 60 years old

**Income Level:** \$250,000–\$500,000

**Geographic Location:** Global wellness-centric hubs

**Luxury Shopping Frequency:** A few times per year

**Discovery Channels:** Trusted recommendations, cultural events, wellness retreats, impact dashboards

**Shopping Channels:** Luxury clinics, curated retreats, membership platforms



## Preferences

- Premium wellness, cultural preservation, and ecological retreats.
- Experiences that extend personal vitality and planetary health.

## Motivations

- Seeks measurable proof of impact.
- Wants longevity treatments integrated with regenerative ecosystems.
- Believes luxury equals contribution and belonging.

## Brand Opportunity Areas

- Build conscious membership networks joining wellness and sustainability.
- Tokenize contributions to function as access credentials.
- Ritualize recognition through ceremonies and collective badges.

## Pain Points

- Distrusts unverified sustainability claims.
- Avoids wellness experiences without scientific grounding.
- Prefers clinically backed and impact-authenticated services.

# STEEPIng into the Future ...

The STEEP framework examines how Social, Technological, Economic, Environmental, and Political forces are shaping digitally enabled luxury. Survey signals, executive interviews, and foresight analysis point to three trajectories: identity sovereignty, resilient supply chains, and conscious networks.

## 5-Year Factors

### Social

- Clients embrace AI-driven balance but resist opacity.
- 47% prefer verified platforms to build confidence.

### Political

- Digital product passport mandates expand from the EU to U.S. pilots.
- Regulators tighten data and provenance standards as identity ecosystems grow.

### Technological

- Houses integrate DPPs, blockchain provenance, AI concierges.
- 31% show readiness for digital twins in shopping.

### Economic

- Provenance becomes a key trust driver; 56% cite it as critical.
- Rapid scaling risks data saturation and fatigue.

### Environmental

- Pilots for adaptive sourcing and regenerative materials.
- Climate shocks test resilience and shift; scarcity into a curated story.

### Black Swan Event (5 Years)

Global identity breach across cloud and CRM stacks compromises Sovereignty Dashboards and DPP ledgers, triggering emergency resets in trust and governance.



## 10-Year Factors

### Social

- Millennials and Gen Z dominate.
- Belonging and contribution outweigh ownership.

### Technological

- Identity ecosystems become default gateways.
- Biometric currencies and ambient interfaces emerge under scrutiny.

### Economic

- Polarization deepens: ultra-rare objects and contribution-based memberships.
- Tokenized impact credits gain legitimacy.

### Environmental

- Sentient supply chains embed resilience.
- Biotech ateliers regenerate materials.

### Political

- Debate over interoperable identity and AI protocols.
- Regulation balances sovereignty with innovation.

### Black Swan Event (10 Years)

Quantum decryption breaks today's cryptography, undermining DPPs, provenance, and contribution tokens, forcing migration to post-quantum security.

# Journey Map

## ● Awareness & Discovery (Pre-Service Stage)

### Client Actions

- Arrives with experiences shaped by identity ecosystems.
- Receives invitations to launches, previews, retreats, or cultural events pre-authorized by digital twins or membership profiles.

### System Frontstage

- Environments adapt to identity signals through real-time curation, ambiance, and storytelling.
- Consultants frame access through narrative, explaining why the client received an invitation and how it aligns with values, heritage, or contribution.

### System Backstage

- Digital twins negotiate offers in real time across brands and industries.
- Provenance systems validate authenticity and alignment before the client arrives.
- Membership networks preselect opportunities based on contribution or resilience thresholds.

## ● Consideration & Personalization (Service Encounter Stage)

### Client Actions

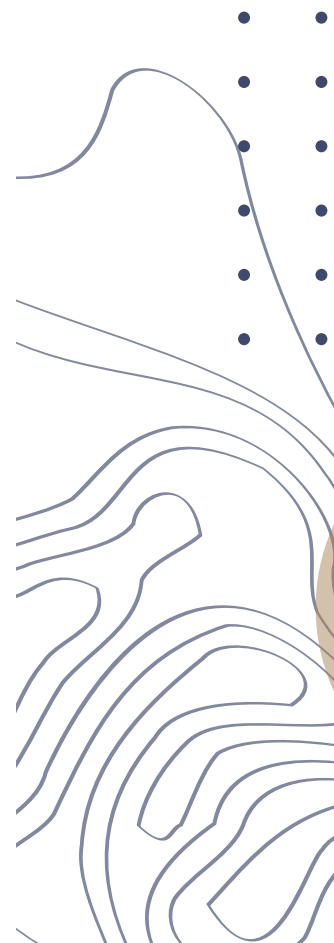
- Engages with curated options shaped by identity, provenance, and contribution signals.
- Compares experiences that adjust dynamically to ecological, cultural, and personal thresholds.

### System Frontstage

- Consultants personalize journeys as rituals of recognition rather than transactions.
- Scarcity is framed as intentional resilience.
- Origin stories and impact narratives enrich discovery.

### System Backstage

- AI fuses biometric, cultural, environmental, and behavioral data into anticipatory flows.
- Adaptive ateliers regenerate or reroute supply in response to climate and material conditions.
- Identity ecosystems refine preferences while maintaining sovereignty and consent controls.





## ● **Purchase & Experience** (Service Encounter Stage)

### **Client Actions**

- Finalizes purchases or memberships that affirm vitality, heritage, or contribution.
- Participates in curated wellness, cultural, or regenerative experiences that deepen belonging.

### **System Frontstage**

- Consultants deliver ceremonial handovers grounded in provenance, stewardship, or identity alignment.
- Membership access is affirmed through ritual, such as impact badges or cultural artifacts.

### **System Backstage**

- Tokenized ledgers authenticate provenance, contribution, and ownership in real time.
- Intelligent systems ensure seamless orchestration across travel, fashion, wellness, culture, and supply.
- Regenerative networks allocate resources to sustain ecological and cultural commitments.

## ● **Post-Service / Scenario Building** (Post-Service Stage)

### **Client Actions**

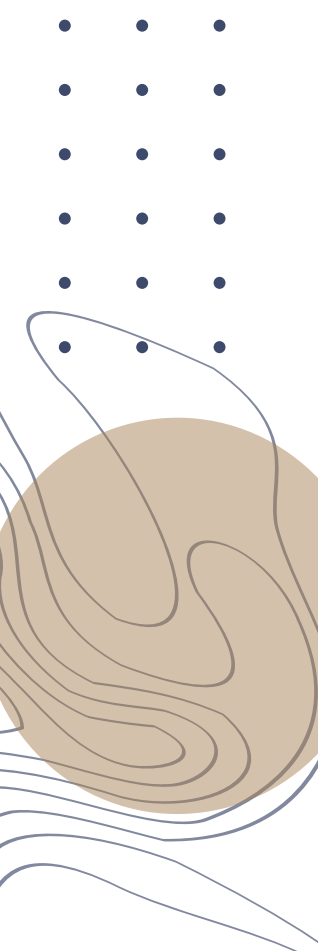
- Hospitality: Guests receive recognition for measurable contributions — 61  
from forests restored to cultural archives preserved.
- Luxury Goods: Ownership extends into digital twins, with future anticipations already aligned and scheduled.

### **System Frontstage**

- Clients are honored through intimate or collective ceremonies that reaffirm belonging.
- Experiences close with acknowledgment of stewardship, cultural value, or identity resonance.
- Anticipation for future alignment is seeded through next-step cues.

### **System Backstage**

- Sovereignty dashboards update permissions and refine orchestration boundaries.
- Identity ecosystems negotiate new opportunities across sectors.
- Networks evolve based on contribution metrics, resilience data, and personal vitality signals.



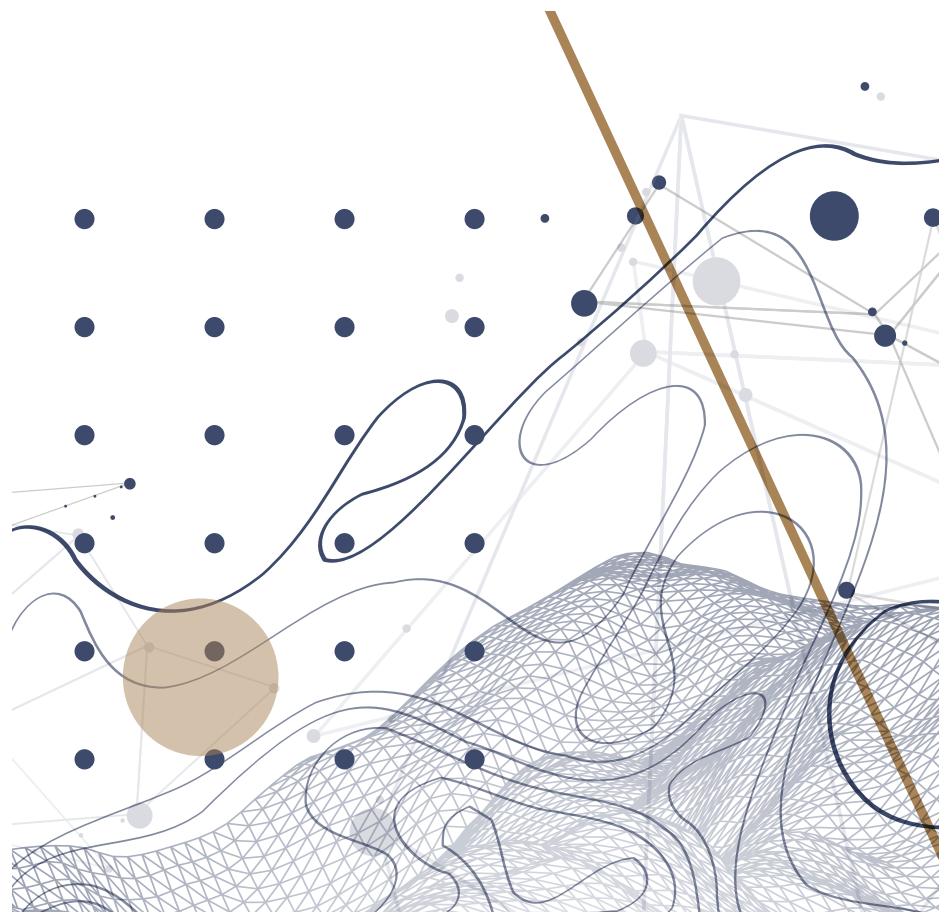
# Acknowledgments

The authors would like to extend their deepest gratitude to the individuals who played a pivotal role in shaping this research. We are especially grateful to our research mentors — Diana Diriwaechter, John Storey, Alessandro Cannatà, and Nye Warburton — whose invaluable guidance throughout the interview process greatly enriched our findings.

We also extend our sincere appreciation to Christine Fish, Tom Hardy, Chris Murrah, SuAnne Fu, Victor Ermoli, Meloney Moore, and Allison Steinweg for their mentorship beyond the research process. Their insights through workshops, initiatives like SCADamp and SCADpro, and other learning opportunities provided crucial support in developing our perspectives.

A special thanks to the industry professionals whose insights helped shape our understanding of the evolving luxury landscape: Marc Bain, Fred Gilbert, Eric Lent, Julie Bornstein, Dina Fierro, Cyril Foiret, Seth Piezas, Joshua To, Bob Chavez, Stephanie Horton, Kate Aronowitz, and Eric Uhlir. Their expertise and perspectives provided invaluable depth to our research.

This report would not have been possible without the dedication and efforts of everyone involved, and we appreciate the time and knowledge shared in pursuit of a deeper exploration of the future of digitally enabled luxury experiences.



# Special Thanks To

## Industry Mentors:

### **Cyril Foiret**

Founder and Creative Director,  
Maison Meta

### **Dina Fierro**

Vice President Global Consumer  
Engagement, K18 Hair

### **Eric Lent**

Chief Revenue Officer, Blue Heron

### **Fred Gilbert**

Vice President, Google Workspace Head  
of User Experience, Google

### **Joshua To**

Vice President of Product Design, AR,  
AI and Wearables, Meta

### **Julie Bornstein**

Founder and CEO, Daydream

### **Seth Piezas**

Senior Product Manager, NVIDIA

### **Stephanie Horton**

Senior Director of Global Consumer  
Marketing, Commerce, Google

## SCAD Faculty Mentors:

### **Alessandro Cannatà**

Chair, luxury and brand management

### **Christine Fish**

SCADpro professor

### **Christopher Murruh**

Associate chair, acting

### **Diana Diriwaechter**

visual effects professor

### **Meloney Moore**

Dean, The De Sole School of Business  
Innovation

### **Nye Warburton**

Chair, interactive design and game  
development, Applied AI

### **SuAnne Fu**

Dean, School of Creative Technology

### **Victor Ermoli**

Dean, School of Design

## SCAD & SCADask team:

### **Jason Fox**

(M.F.A., graphic design, 2000;  
B.F.A., graphic design, 1998)  
Chief academic officer

### **Mauricio Herrera Manzur**

(M.F.A., dramatic writing, 2024;  
B.F.A., film and television, 2021)  
SCADask principle design researcher

### **Valarie Kite**

Executive director, assessment  
and curriculum

### **Lily McCormick**

Survey coordinator

### **Paula Mogollón Mejía**

(M.A., service design, 2023)  
SCADask principal design researcher

### **Erin O’Leary**

Vice president, institutional effectiveness

### **Bretagné O’Neill**

institutional effectiveness and  
assessment coordinator

### **Wayne Slaydon**

Data visualization specialist

### **Sarah Snook**

Senior SCADask researcher/writer

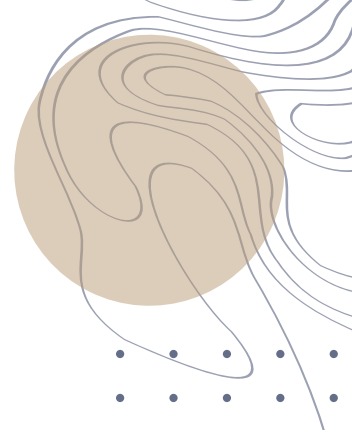
### **Allison Steinweg**

Director of SCADamp

### **Ali Wrona**

Data visualization specialist

# Research Team



**Chris Atkinson**  
M.F.A., motion media  
design, 2025



**Hailin Chen**  
M.F.A., service design,  
2025



**Jingwen Chen**  
M.F.A. industrial design,  
2025

64



**Qixuan Hu**  
M.F.A., service design,  
2025

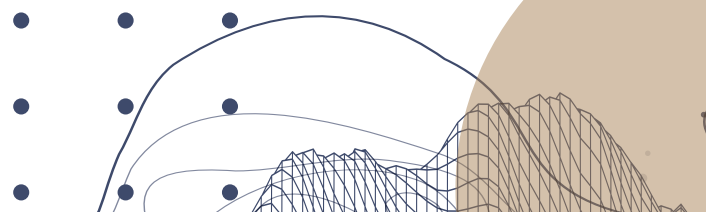


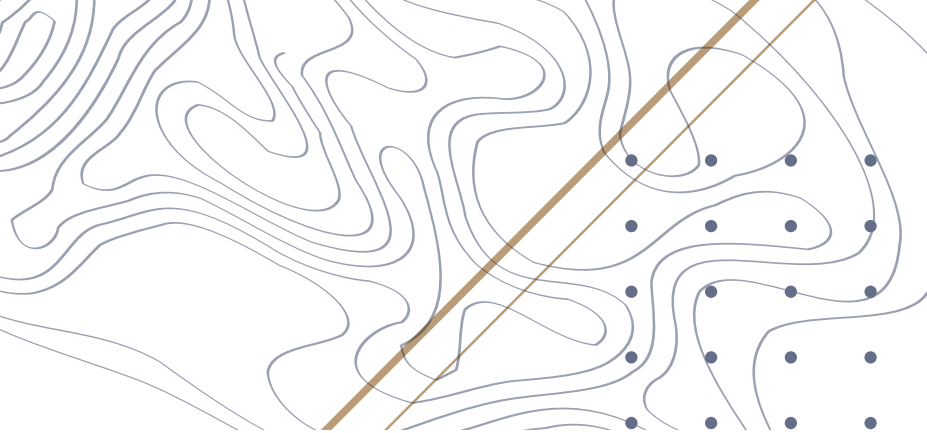
**McKenna Kreiling**  
M.F.A., themed  
entertainment design,  
2025

**LEAD RESEARCHER**



**Chandhana  
Lingampally**  
M.F.A. design  
management, 2025





**Micaelyn Mann**  
M.F.A., illustration, 2025



**Danyi Qiu**  
M.F.A., motion media  
design, 2025



**Gianfranco Ricci**  
M.F.A., themed  
entertainment design,  
2025



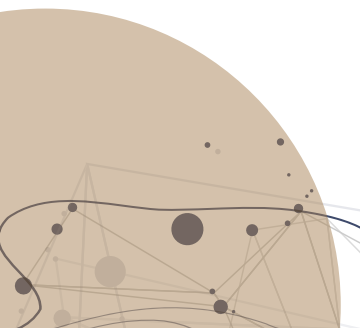
**Camille Zhang**  
M.F.A. service design,  
2025



**Herk Zhao**  
M.F.A., design  
management, 2025



**Kudzayi Kanyama**  
Professor fashion  
marketing and  
management (M.F.A.,  
luxury and brand  
management, 2022)



# References

(Amed et al., 2025) Amed, I., D'Auria, G., & Company, M. &. (2025, July 1). The State of Fashion 2025: Challenges at every turn. The Business of Fashion. Retrieved Sep 29, 2025, from <https://www.businessoffashion.com/reports/news-analysis/the-state-of-fashion-2025-bof-mckinsey-report/>

(Article 13: Transparency and Provision of Information to Deployers | EU Artificial Intelligence Act, n.d.) Article 13: Transparency and provision of information to deployers | EU Artificial Intelligence Act. (n.d.). Retrieved October 05, 2025, from <https://artificialintelligenceact.eu/article/13/>

(Aura Blockchain Consortium, 2025) Aura Blockchain Consortium. (2025, January 16). Highlights - AURA Blockchain Consortium. Retrieved September 20, 2025, from <https://auraconsortium.com/highlights>

(Aura Blockchain Consortium, 2025) Aura Blockchain Consortium. (2025, September 30). AURA Blockchain Consortium: blockchain for luxury goods. Retrieved September 21, 2025, from <https://auraconsortium.com/>

Auraclicks. (n.d.). Conceptual representation of a decentralized lending network showing direct financial transactions between individuals via blockchain based smart contracts symbolizing the power of P2P lending [Image]. Adobe Stock. <https://stock.adobe.com/images/conceptual-representation-of-a-decentralized-lending-network-showing-direct-financial-transactions-between-individuals-via-blockchain-based-smart-contracts-symbolizing-the-power-of-p2p-lending/1353092375>

Auremar. (n.d.). mature couple in luxury shopping street pointing at clothing store [Image]. Adobe Stock. <https://stock.adobe.com/images/mature-couple-in-luxury-shopping-street-pointing-at-clothing-store/372311260>

(Balchandani et al., 2025) Balchandani, A., Barrelet, D., Röllkens, F., & D'Auria, G. (2025, November 17). The State of Fashion 2026: When the rules change. McKinsey & Company. Retrieved October 11, 2025, from <https://www.mckinsey.com/industries/retail/our-insights/state-of-fashion>

Bartek. (n.d.). AI-Enhanced Customer Personalization in Retail with Digital Shoe Displays and Recommendations [Image]. Adobe Stock. <https://stock.adobe.com/images/ai-enhanced-customer-personalization-in-retail-with-digital-shoe-displays-and-recommendations/1120519252>

Bartek. (n.d.). Ai-Enhanced Visual Shopping Display with Interactive Outfit Visualization in Modern Retail Fashion Storefront [Image]. Adobe Stock. <https://stock.adobe.com/images/ai-enhanced-visual-shopping-display-with-interactive-outfit-visualization-in-modern-retail-fashion-storefront/1313839331>

Bartek. (n.d.). Smart Mirror Retail Technology Enhances Shopping with Virtual Clothing Try-On Experience [Image]. Adobe Stock. <https://stock.adobe.com/images/smart-mirror-retail-technology-enhances-shopping-with-virtual-clothing-try-on-experience/1230218148>

(Building Bonds: The Essential Role of Client Advisors in Enhancing Customer Loyalty, 2024) Building Bonds: The essential role of client advisors in enhancing customer loyalty. (2024, December 13). Deloitte Insights. Retrieved October 21, 2025, from <https://www.deloittdigital.com/fr/en/insights/perspective/building-bonds-the-essential-role-of-client-advisors-in-enhancing-customer-loyalty.html>





## References Continued

(Built to Deliver: Nine Trends Advancing Government's Capacity to Deliver on Big Things, 2025) Built to deliver: Nine trends advancing government's capacity to deliver on big things. (2025, July 11). Deloitte Insights. Retrieved October 21, 2025, from

<https://www.deloitte.com/us/en/insights/industry/government-public-sector-services/government-trends/2025/ai-public-services-enhancement.html>

Carballo. (n.d.). modern latin girl with sunglasses and shopping hat [Image]. Adobe Stock. <https://stock.adobe.com/images/modern-latin-girl-with-sunglasses-and-shopping-hat/1194697950>

(Company, 2024) Company, M. &. (2024, December 10). Sustainability: the case for collective action. The Business of Fashion. Retrieved October 31, 2025, from

<https://www.businessoffashion.com/articles/sustainability/the-state-of-fashion-2025-report-sustainability-decarbonisation-circular-emission/>

(D'Arpizio et al., 2025), D'Arpizio, C., Levato, F., Steiner, A., & De Montgolfier, J. (2025, January 17). Luxury in transition: Securing future growth. Bain. Retrieved October 30, 2025, from

<https://www.bain.com/insights/luxury-in-transition-securing-future-growth/>

(Data.Europa.Eu, 2025) Data.Europa.Eu. (2025, February 13). EU's Digital Product Passport: Advancing transparency and sustainability. data.europa.eu. Retrieved October 21, 2025, from

<https://data.europa.eu/en/news-events/news/eus-digital-product-passport-advancing-transparency-and-sustainability>

(Deloitte Study: Global Luxury Goods Market, n.d.) Deloitte study: global luxury goods market. (n.d.). Retrieved October 21, 2025, from

<https://assomac.it/en/news/news-from-world/deloitte-study-global-luxury-goods-market/>

(Deloitte's Global Fashion & Luxury Industry | Deloitte Global, n.d.) Deloitte's Global Fashion & Luxury Industry | Deloitte Global. (n.d.). [Video]. Deloitte. Retrieved October 25, 2025, from

<https://www.deloitte.com/global/en/Industries/consumer/about/fashion-and-luxury.html>

(Digital Passports: Revolutionizing Transparency and Traceability in Luxury Goods, 2024) Digital Passports: Revolutionizing transparency and traceability in luxury goods. (2024, December 12). Deloitte Insights. Retrieved September 16, 2025, from

<https://www.deloittdigital.com/fr/en/insights/perspective/digital-passports-revolutionizing-transparency-and-traceability-in-luxury-goods.html>

(Digital Product Passports (DPP): What, How, and Why?, n.d.) Digital product passports (DPP): what, how, and why? (n.d.). Retrieved September 16, 2025, from

<https://www.circularise.com/blogs/digital-product-passports-dpp-what-how-and-why>

(Ecodesign for Sustainable Products Regulation, n.d.) Ecodesign for sustainable products Regulation. (n.d.). European Commission. Retrieved September 19, 2025, from

[https://commission.europa.eu/energy-climate-change-environment/standards-tools-and-labels/products-labelling-rules-and-requirements/ecodesign-sustainable-products-regulation\\_en](https://commission.europa.eu/energy-climate-change-environment/standards-tools-and-labels/products-labelling-rules-and-requirements/ecodesign-sustainable-products-regulation_en)

(Empowering Sales Associates & Ambassadors (CRC) With Gen AI: Transforming Customer Experiences, 2024) Empowering Sales Associates & Ambassadors (CRC) with Gen AI: Transforming Customer Experiences. (2024, December 16). Deloitte Insights. Retrieved September 16, 2025, from

<https://www.deloittdigital.com/fr/en/insights/perspective/empowering-sales-associates-ambassadors-crc-with-gen-ai-transforming-customer-experiences.html>

## References Continued

(EU AI Act: First Regulation on Artificial Intelligence | Topics | European Parliament, 2023) EU AI Act: first regulation on artificial intelligence | Topics | European Parliament. (2023, August 6). Topics | European Parliament. Retrieved September 16, 2025, from <https://www.europarl.europa.eu/topics/en/article/20230601STO93804/eu-ai-act-first-regulation-on-artificial-intelligence>

(Faccioli et al., 2023) Faccioli, G., Martin, K., Palombella, I., & Deloitte. (2023). Global Powers of Luxury Goods 2023. In Game Changing Steps in Luxury. Retrieved October 21, 2025.

(Fromm, 2024) Fromm, J. (2024, October 23). How Gen Z is shaping sustainability in the manufacturing industry. Forbes. Retrieved October 21, 2025, from <https://www.forbes.com/sites/jefffromm/2024/10/23/how-gen-z-is-shaping-sustainability-in-the-manufacturing-industry/>

(Garrett, 2023) Garrett, J. (2023, October 3). Learning from LVMH's Bernard Arnault — Investment Masters Class. Investment Masters Class. Retrieved October 25, 2025, from <https://mastersinvest.com/newblog/2023/9/5/learning-from-lvmhs-bernard-arnault>

GS-Studio. (n.d.). E-commerce Jewelry Shopping Experience [Image]. Adobe Stock. <https://stock.adobe.com/images/e-commerce-jewelry-shopping-experience/993614574>

(KPMG & KPMG International Limited, 2025) KPMG & KPMG International Limited. (2025, November 11). Digital Product Passport (DPP). KPMG. Retrieved October 21, 2025, from <https://kpmg.com/dk/en/esg/digital-product-passport--dpp-.html>

(Luxury Maisons & Generative AI: Redefining Brand Activation, 2024) Luxury Maisons & Generative AI: Redefining Brand Activation. (2024, December 8). Deloitte Insights. Retrieved September 16, 2025, from <https://www.deloittdigital.com/fr/en/insights/perspective/luxury-maisons-and-generative-ai-redefining-brand-activation.html>

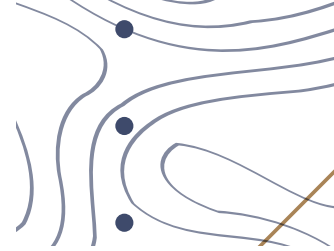
(Morletto, 2024) Morletto, E. (2024, July 2). Aura Blockchain tops the 40 million mark for encrypted products. Luxury Tribune. Retrieved October 21, 2025, from <https://www.luxurytribune.com/en/aura-blockchain-tops-the-40-million-mark-for-encrypted-products>

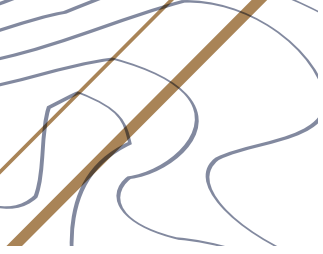
Neirfy. (n.d.). A futuristic warehouse that features advanced technology and innovative logistics solutions for efficiency [Image]. Adobe Stock. <https://stock.adobe.com/images/a-futuristic-warehouse-that-features-advanced-technology-and-innovative-logistics-solutions-for-efficiency/1067698764>

(NielsenIQ, 2025) NielsenIQ. (2025, September 24). Global State of Health & Wellness 2025 - NIQ. NIQ. Retrieved November 14, 2025, from <https://nielseniq.com/global/en/insights/report/2025/global-state-of-health-wellness-2025/>

Nitiroj. (n.d.). Surreal retail environment with motionblurred shoppers, emphasizing big data insights and sales forecasting, cyberpunk aesthetics, glowing screens, ultradetailed [Image]. Adobe Stock. <https://stock.adobe.com/images/surreal-retail-environment-with-motionblurred-shoppers-emphasizing-big-data-insights-and-sales-forecasting-cyberpunk-aesthetics-glowing-screens-ultradetailed/1341473536>

Poguz.P. (n.d.). Online shopping 3d concepts, Smartphone mobile app interface with interactive icons [Image]. Adobe Stock. <https://stock.adobe.com/images/online-shopping-3d-concepts-smartphone-mobile-app-interface-with-interactive-icons/747022791>





## References Continued

(Positive Luxury Sustainability Awards 2025, 2025) Positive Luxury Sustainability Awards 2025. (2025, October 13). Positive Luxury. Retrieved October 25, 2025, from <https://www.positiveluxury.com/positive-luxury-awards-2025/>

(Post | LinkedIn, n.d.) (4) Post | LinkedIn. (n.d.). Retrieved October 22, 2025, from [https://www.linkedin.com/posts/ravouthkeuky\\_deloittedigital-luxury-generativeai-activity-7271828102232555520-pTze/](https://www.linkedin.com/posts/ravouthkeuky_deloittedigital-luxury-generativeai-activity-7271828102232555520-pTze/)

(Post | LinkedIn, n.d.) (5) Post | LinkedIn. (n.d.). Retrieved November 14, 2025, from [https://www.linkedin.com/posts/elkoreichi\\_lvmh-leadership-ai-activity-7392724896155471872-nX9U/](https://www.linkedin.com/posts/elkoreichi_lvmh-leadership-ai-activity-7392724896155471872-nX9U/)

(Staff, 2025) Staff, W. M. (2025, October 31). Gen Z turns to sustainable luxury as the ultimate flex. The Wise Marketer. Retrieved November 14, 2025, from <https://thewisemarketer.com/gen-z-turns-to-sustainable-luxury-as-the-ultimate-flex/>

TopMedia. (n.d.). Elegant Fashion Display of Stylish Dresses in Boutique [Image]. Adobe Stock. <https://stock.adobe.com/images/elegant-fashion-display-of-stylish-dresses-in-boutique/1133955831>

TopMedia. (n.d.). Fashion Innovation with Digital Display Technology [Image]. Adobe Stock. <https://stock.adobe.com/images/fashion-innovation-with-digital-display-technology/1133955780>

TopMedia. (n.d.). Vibrant Fashion Display in Modern Retail Store [Image]. Adobe Stock. <https://stock.adobe.com/images/vibrant-fashion-display-in-modern-retail-store/1133955816>

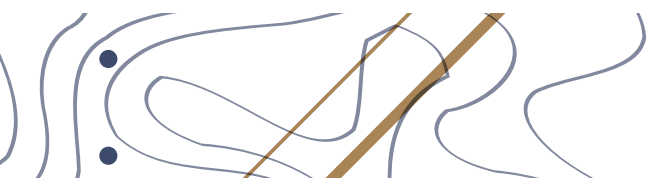
(Uotila, n.d.) Uotila, A. (n.d.). Introduction to the ESPR and DPP | Tributech. Tributech. Retrieved October 25, 2025, from <https://www.tributech.io/blog/introduction-to-ESPR-and-DPP>

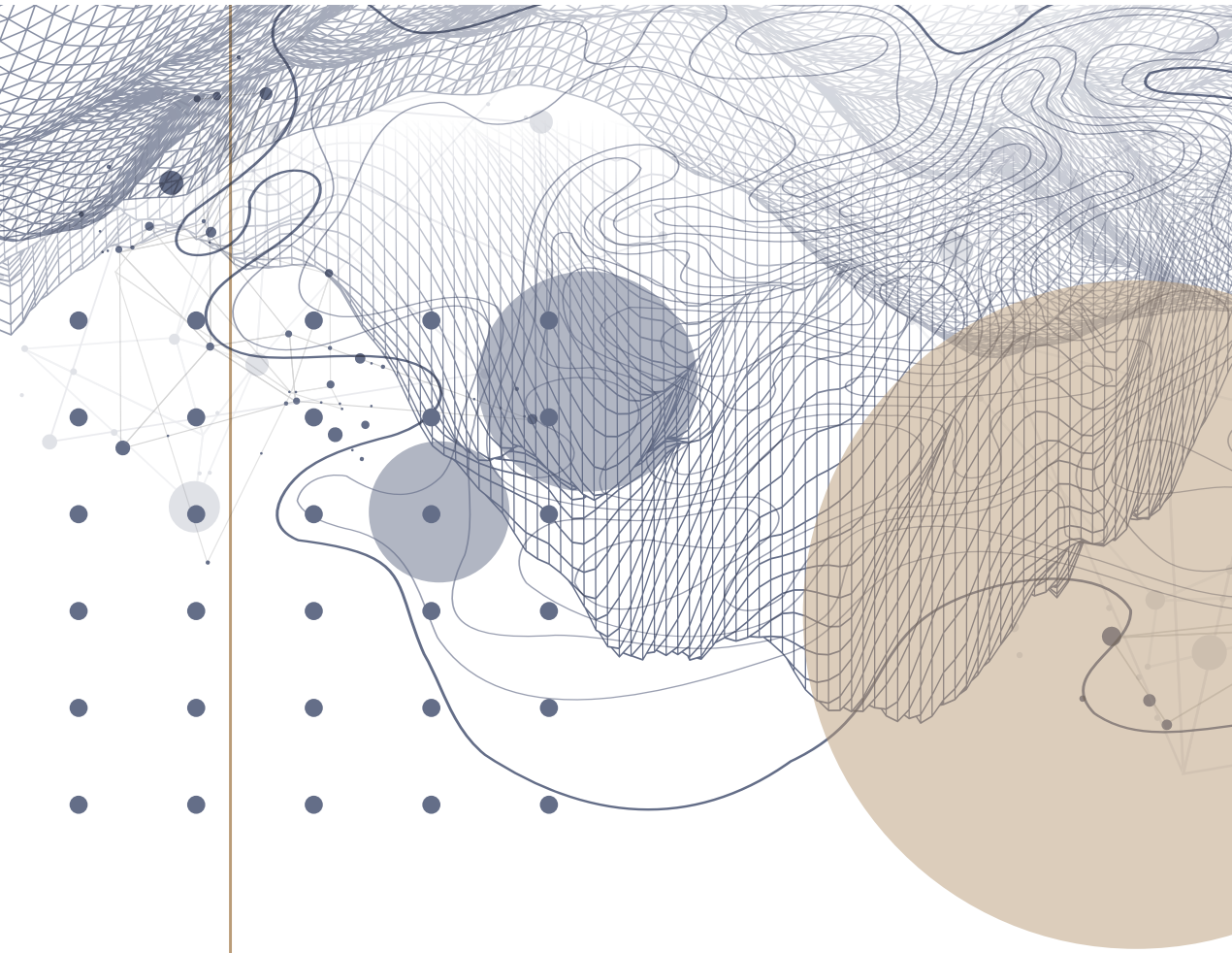
WS Studio 1985. (n.d.). Businessman, night or vr global network hologram for digital future technology, big data or virtual reality. Dark office, globe overlay or person in futuristic metaverse world [Image]. Adobe Stock. <https://stock.adobe.com/images/businessman-night-or-vr-global-network-hologram-for-digital-future-technology-big-data-or-virtual-reality-dark-office-globe-overlay-or-person-in-futuristic-metaverse-world/698548965>

WS Studio 1985. (n.d.). Solar Panel Installation with Data Visualization on Utility Scale [Image]. Adobe Stock. <https://stock.adobe.com/images/solar-panel-installation-with-data-visualization-on-utility-scale/1498368393>

ЮРИЙ ПОЗДНИКОВ. (n.d.). Elegant man choosing perfume in a luxury store [Image]. Adobe Stock. <https://stock.adobe.com/images/elegant-man-choosing-perfume-in-a-luxury-store/1224586905>

(2025 Edelman Trust Barometer Global Report," n.d.) 2025 Edelman Trust Barometer Global Report. (n.d.). In [https://www.edelman.com/sites/g/files/aatuss191/files/2025-01/2025%20Edelman%20Trust%20Barometer\\_Final.pdf](https://www.edelman.com/sites/g/files/aatuss191/files/2025-01/2025%20Edelman%20Trust%20Barometer_Final.pdf).





# SCADask

SCADask is an applied research studio that leverages the university's collective expertise to facilitate and generate strategic insights for business and media partners. Our design-centered research identifies business opportunities that reveal the future of commerce, creativity, and culture. SCADask initiatives include the university's annual AI Summit, an event that unites design and technology luminaries with SCAD leadership, faculty partners, and students to discuss AI's impact on design, education, and creative careers. SCADask research and award-winning publications like *The Future of the American Dream* and the AI Insights 2024 and 2025 reports have been featured in USA Today, Fast Company, Paste Magazine, AP News, Yahoo! Finance, California Business Journal, and more.

**To partner with us on custom research, email [research@scad.edu](mailto:research@scad.edu).**

© 2026 The Savannah College of Art and Design (SCAD). All rights reserved.

**SCAD**