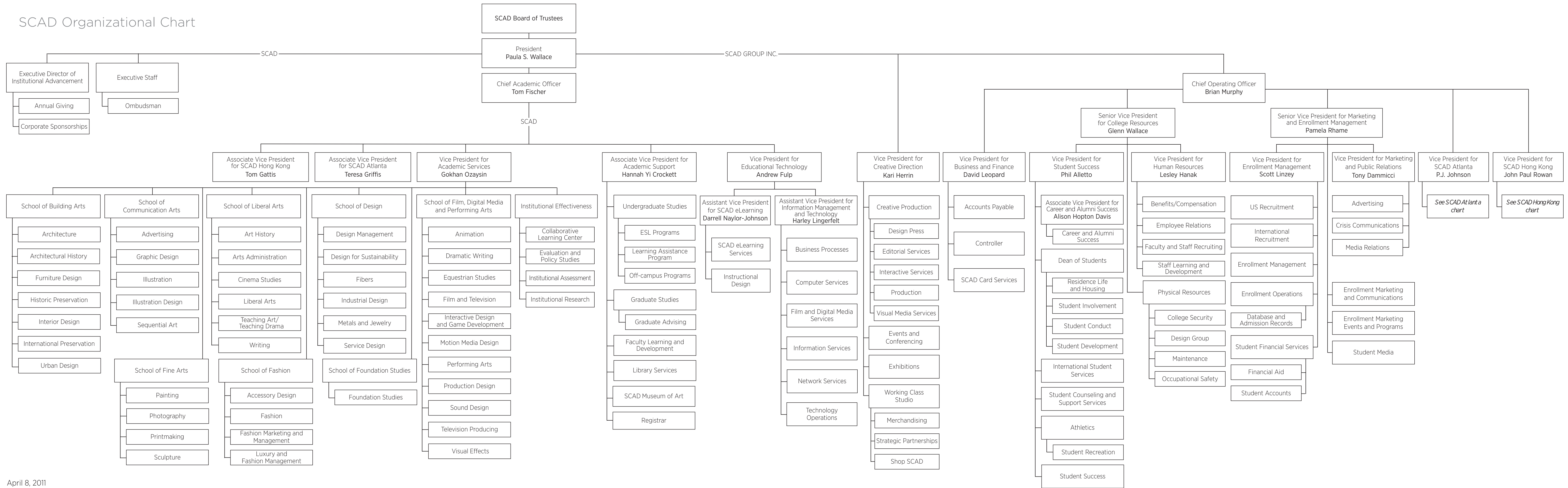
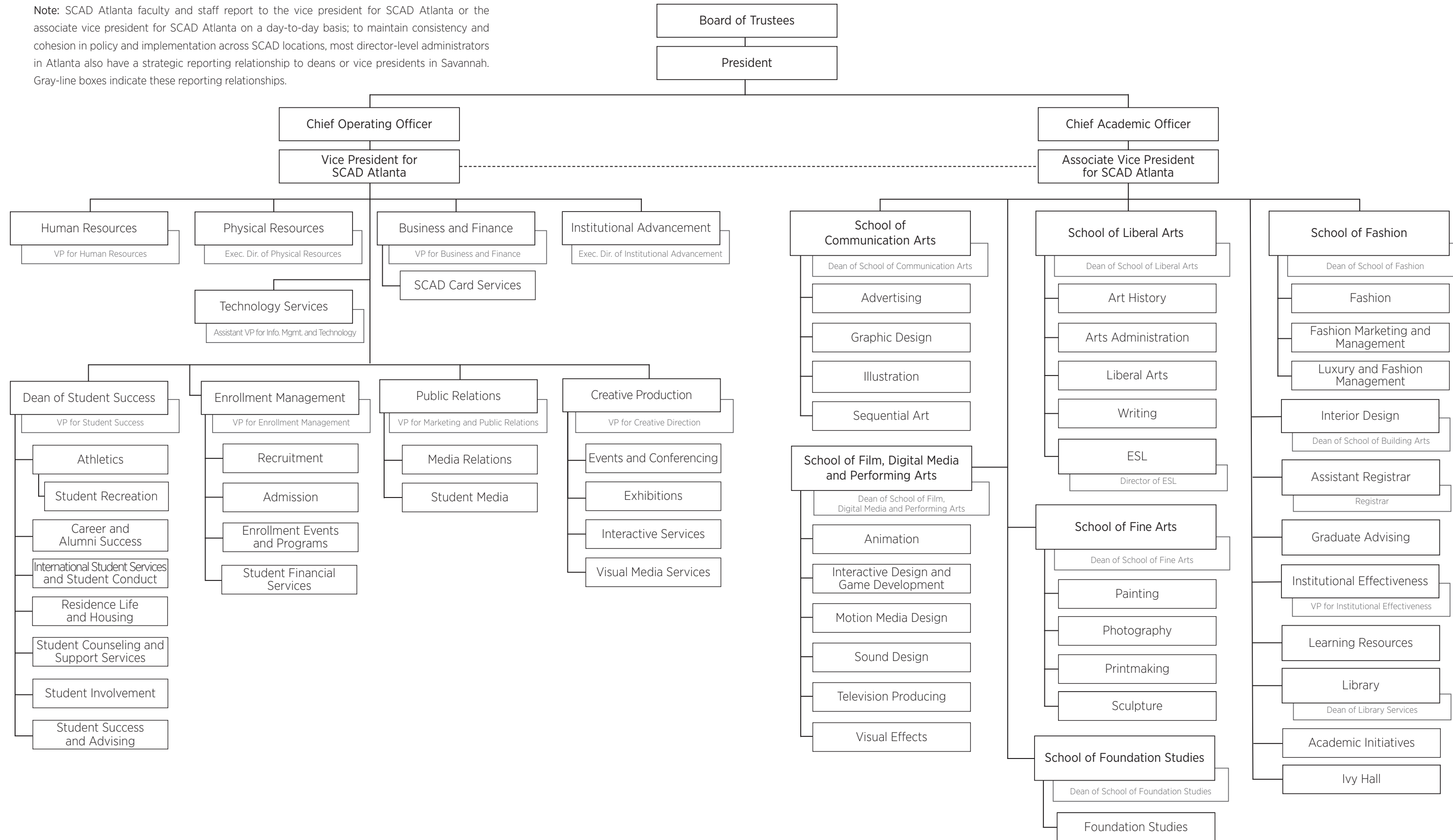


SCAD Organizational Chart



SCAD Atlanta Organizational Chart

Note: SCAD Atlanta faculty and staff report to the vice president for SCAD Atlanta or the associate vice president for SCAD Atlanta on a day-to-day basis; to maintain consistency and cohesion in policy and implementation across SCAD locations, most director-level administrators in Atlanta also have a strategic reporting relationship to deans or vice presidents in Savannah. Gray-line boxes indicate these reporting relationships.



SCAD Hong Kong Organizational Chart

Note: SCAD Hong Kong faculty and staff report to the vice president for SCAD Hong Kong or the associate vice president for SCAD Hong Kong on a day-to-day basis; to maintain consistency and cohesion in policy and implementation across SCAD locations, most director-level administrators in Hong Kong also have a strategic reporting relationship to deans or vice presidents in Savannah. Gray-line boxes indicate these reporting relationships.

